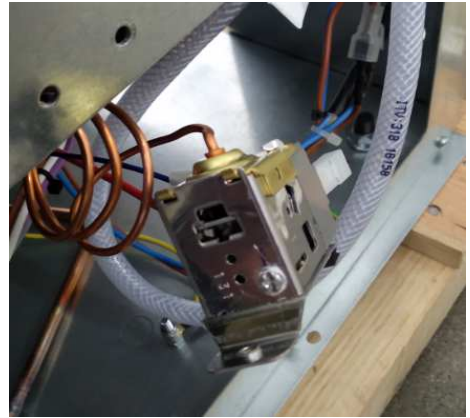
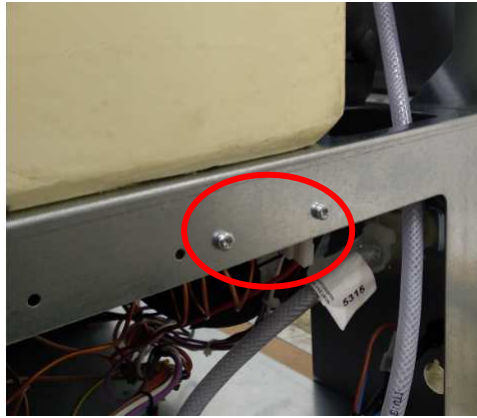
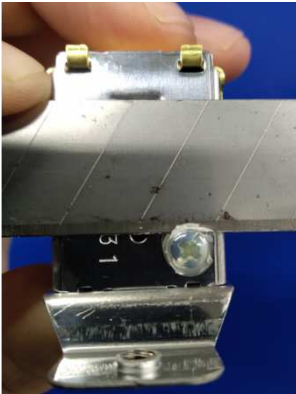


**Before install this unit SPIKA110, you must adjust the fan control pressure switch set up. Follow next steps.**

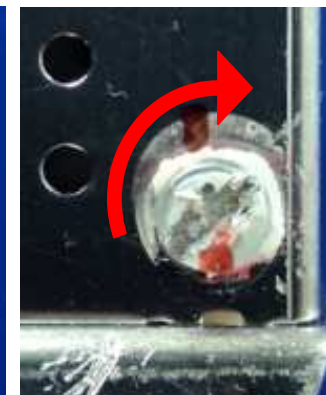
- 1- Remove the right panel and fan control pressure switch. Be careful with capillary tube and electrical connections.



- 2- Unlock and clean the screw removing the glue with a cutter.



- 3- Mark the screw and turn it clockwise 1.5 times. After that, fix it with a drop of glue.



- 4- Place fan pressure control switch and right panel in its positions.