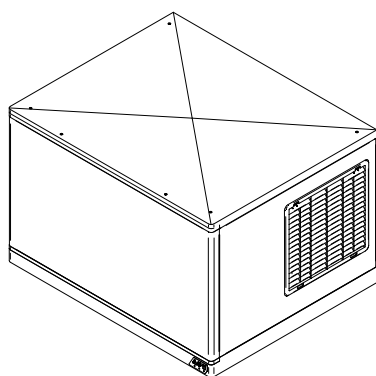
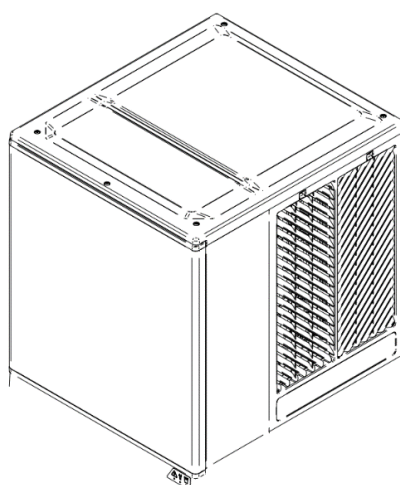


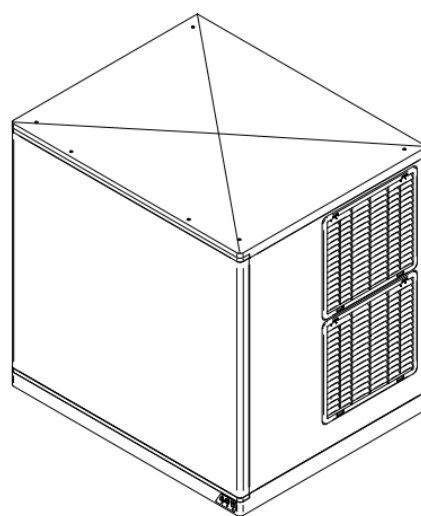
GUIDE TO REPLACE THE ELECTRONIC BOARD ON THE SPIKA MS ITV COD.32642



MS220



MS300SLIM

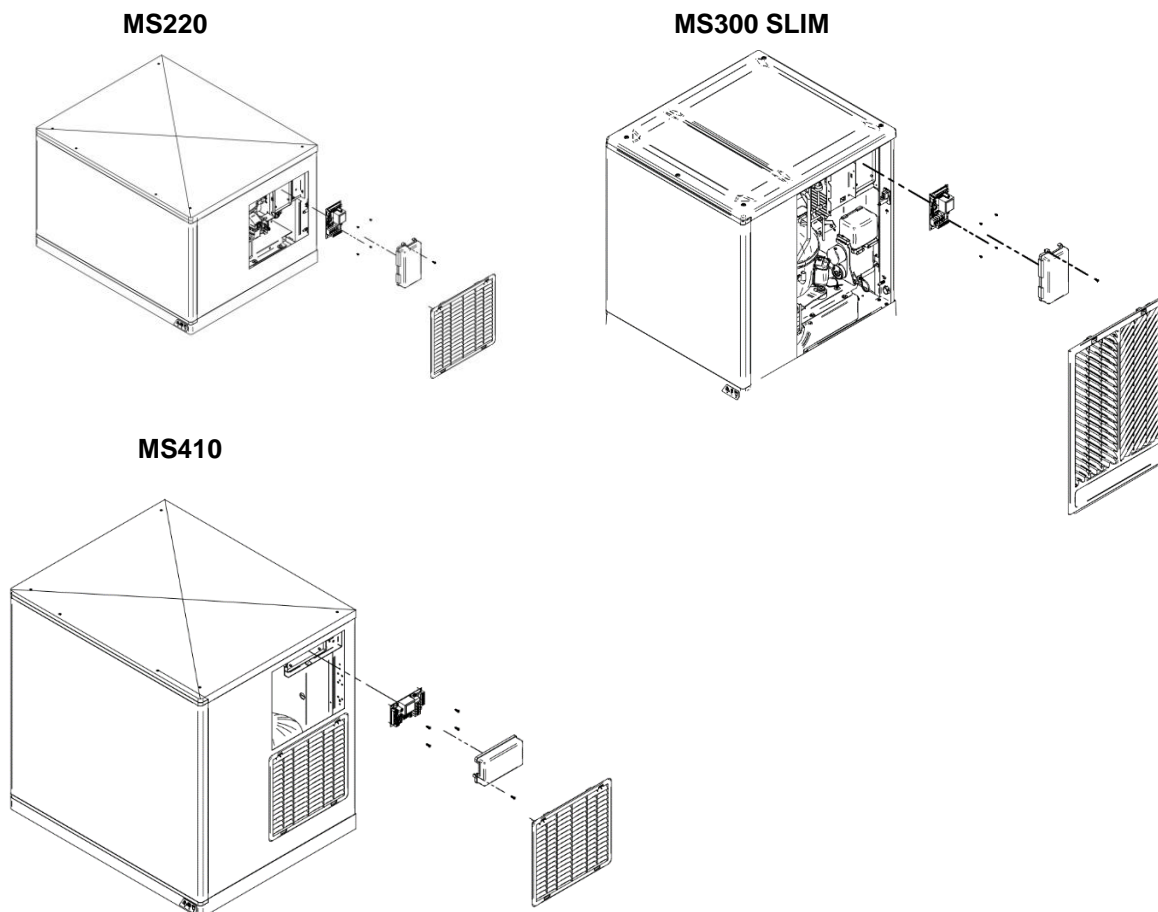


MS410

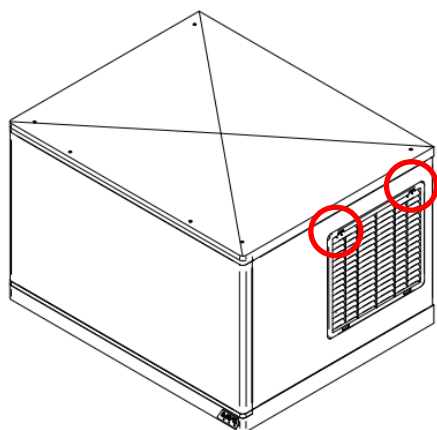
This document is designed to guide you step by step through the process of changing the electronic board in your machine, ensuring the procedure is carried out safely and efficiently.

STEP 1:

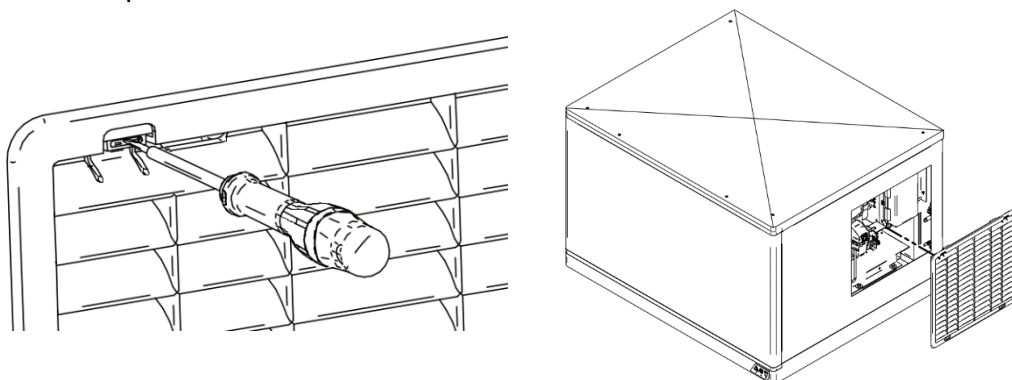
Facing the front of the machine, remove the side louver located on the right side (for models with four side louvers, remove the top right side louver)



For removing the side louver a flat screwdriver can help you in this way:
The side louver has two clips at the top.

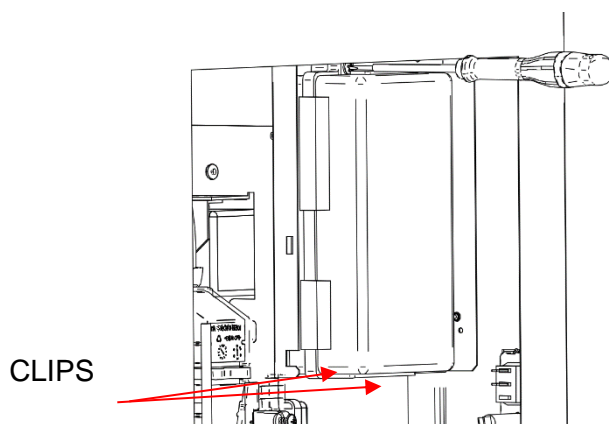


Insert the screwdriver into one clip (as shown in the picture) and push down to release the side louver. Repeat for the other clip.

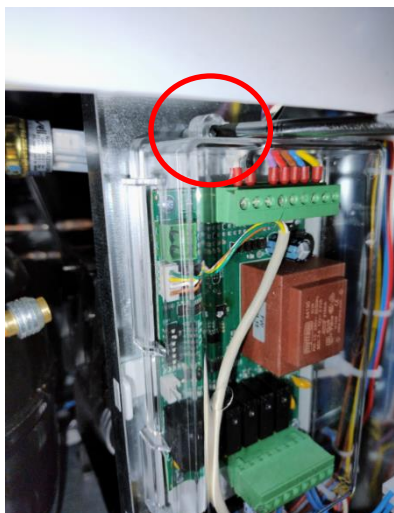


STEP 2:

Now we can see the electronic board under its cover. We have to remove the cover by unscrewing the screw and releasing the clips.



MS220 / MS300SLIM



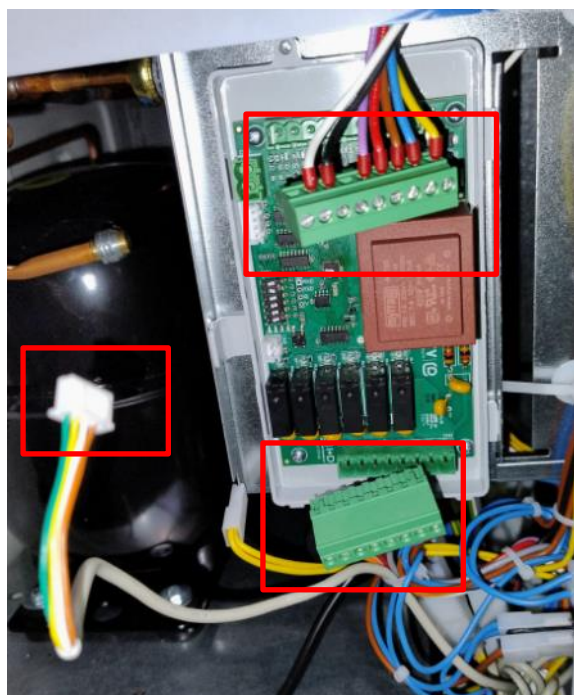
MS410



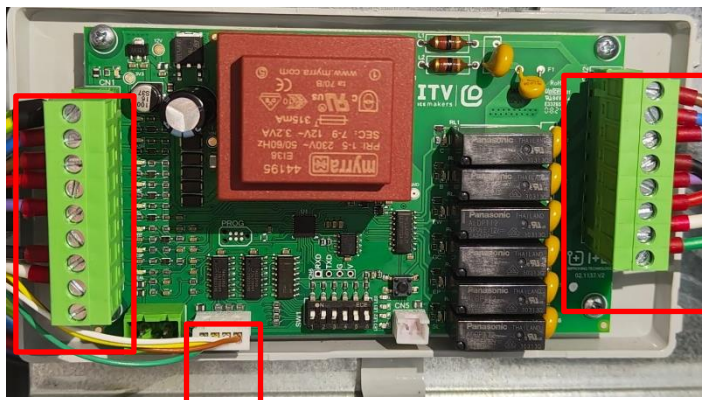
STEP 3:

Once the cover is removed, disconnect the three electrical connectors from the board by hand.

MS220 / MS300SLIM

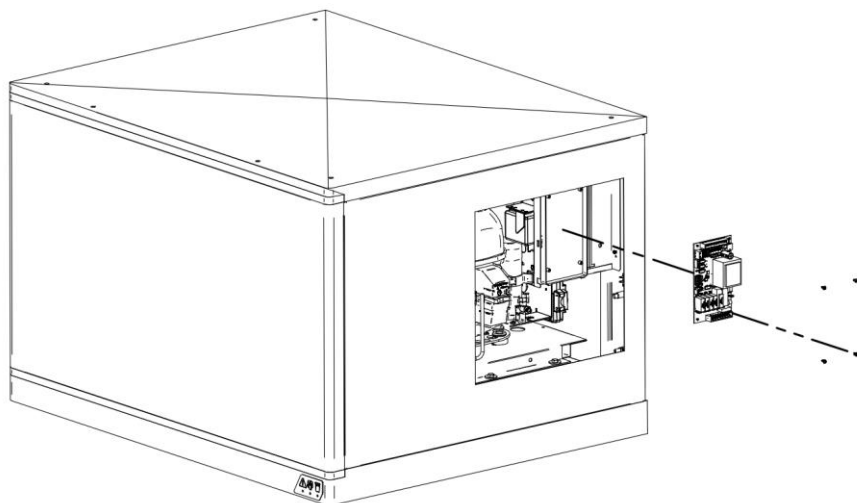


MS410



STEP 4:

To remove the electronic board, it is necessary to unscrew the four screws holding it in place.

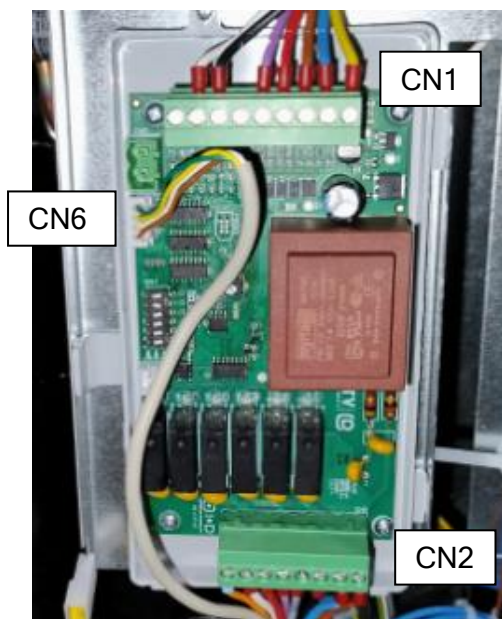


STEP 5:

Replace the old electronic board with the new one that ITV has sent you, and repeat the steps in reverse order to mount the new electronic board

NOTES FOR ASSEMBLY

1. Place the connectors in their original positions as shown in the following picture:



1. CN1: 9-pin connector for the input of the electronic board.;
2. CN2: 8-pin connector for the input of the electronic board.;
3. CN6: Connector for the external display.

2. Pay attention to the cover connection. The cover only has one screw; before screwing it in, make sure that the two clips at the bottom of the cover are correctly engaged

