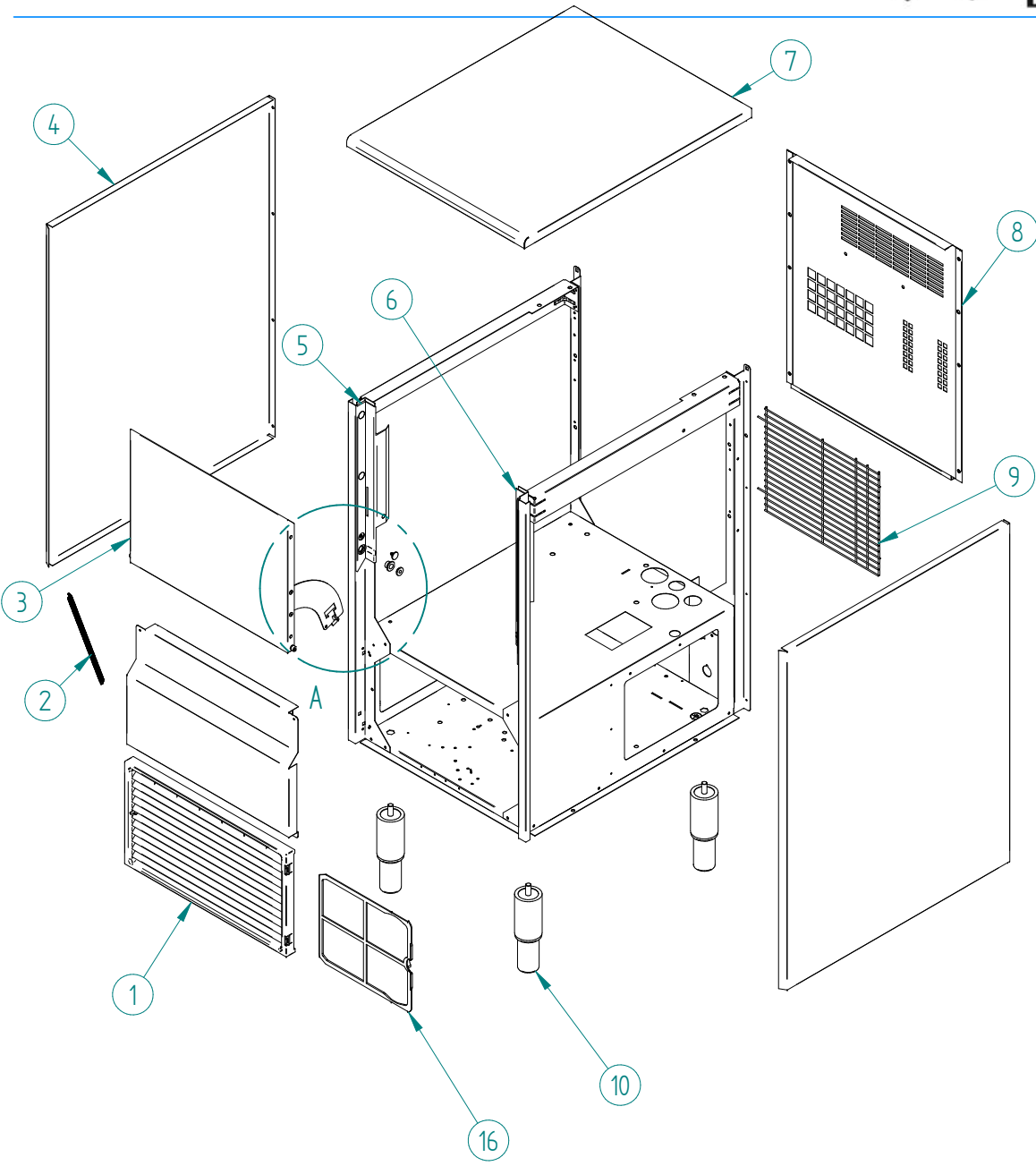


IQN90C R290

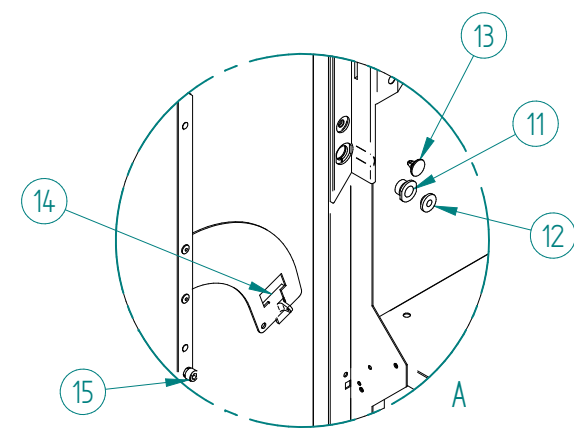
ITV
ICEmakers



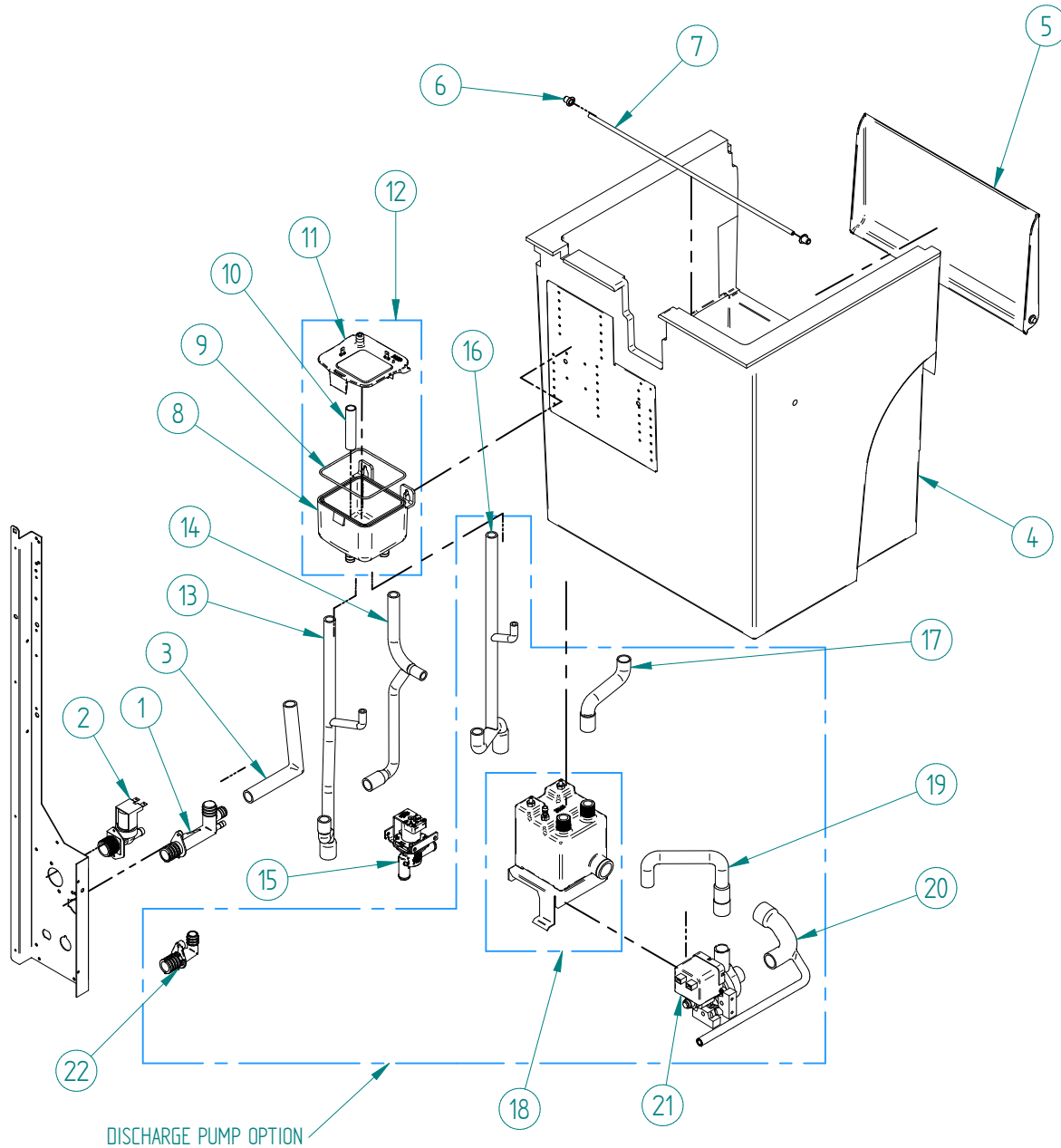
DESPIECE / REPUESTOS
EXPLODED VIEW / SPARE PARTS
EXPLOSIONSZEICHNUNG / ERSATZTEILE
VUE ÉCLATÉÉ / PIÈCES DÉTACHÉES
ESPLOSO / RICAMBI



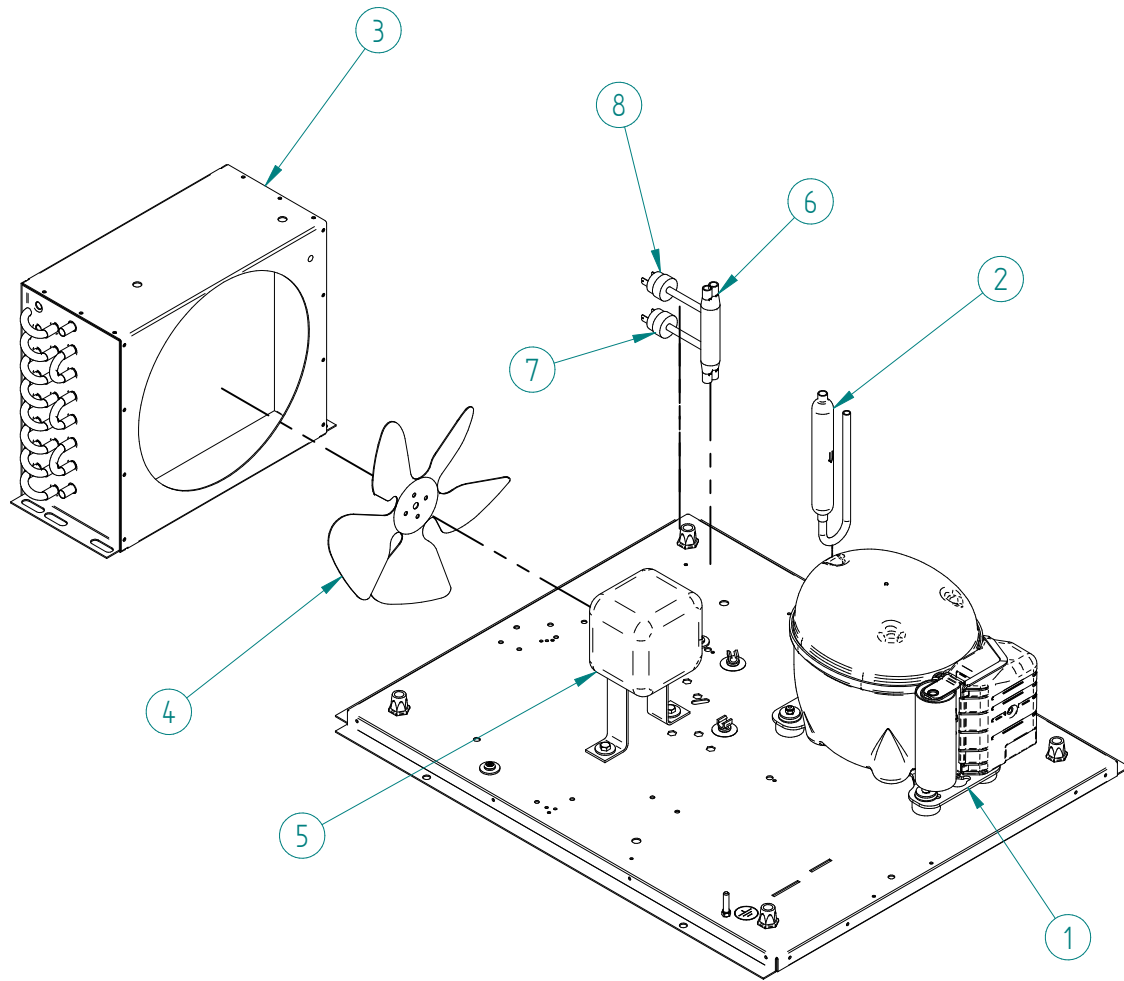
ITEM	DESCRIPTION	CODE
1	FRONT LOUVER	4063A
2	DOOR SPRING	702
3	DOOR ASSEMBLY	5030
4	BOTH SIDE PANEL*	489UA
5	LEFT DOOR GUARD	83
6	RIGHT DOOR GUARD	82
7	TOP PANEL	920A
8	REAR COVER*	635A
9	REAR GRILL	1728
10	LEG	1478
11	DOOR AXE BEARING	1001
12	DOOR AXE BUSHING	155
13	CLIP	113A
14	DOOR BUMPER	156
15	DOOR SCREW	392
16	AIR FILTER	35463



*PROVIDE SERIAL NUMBER

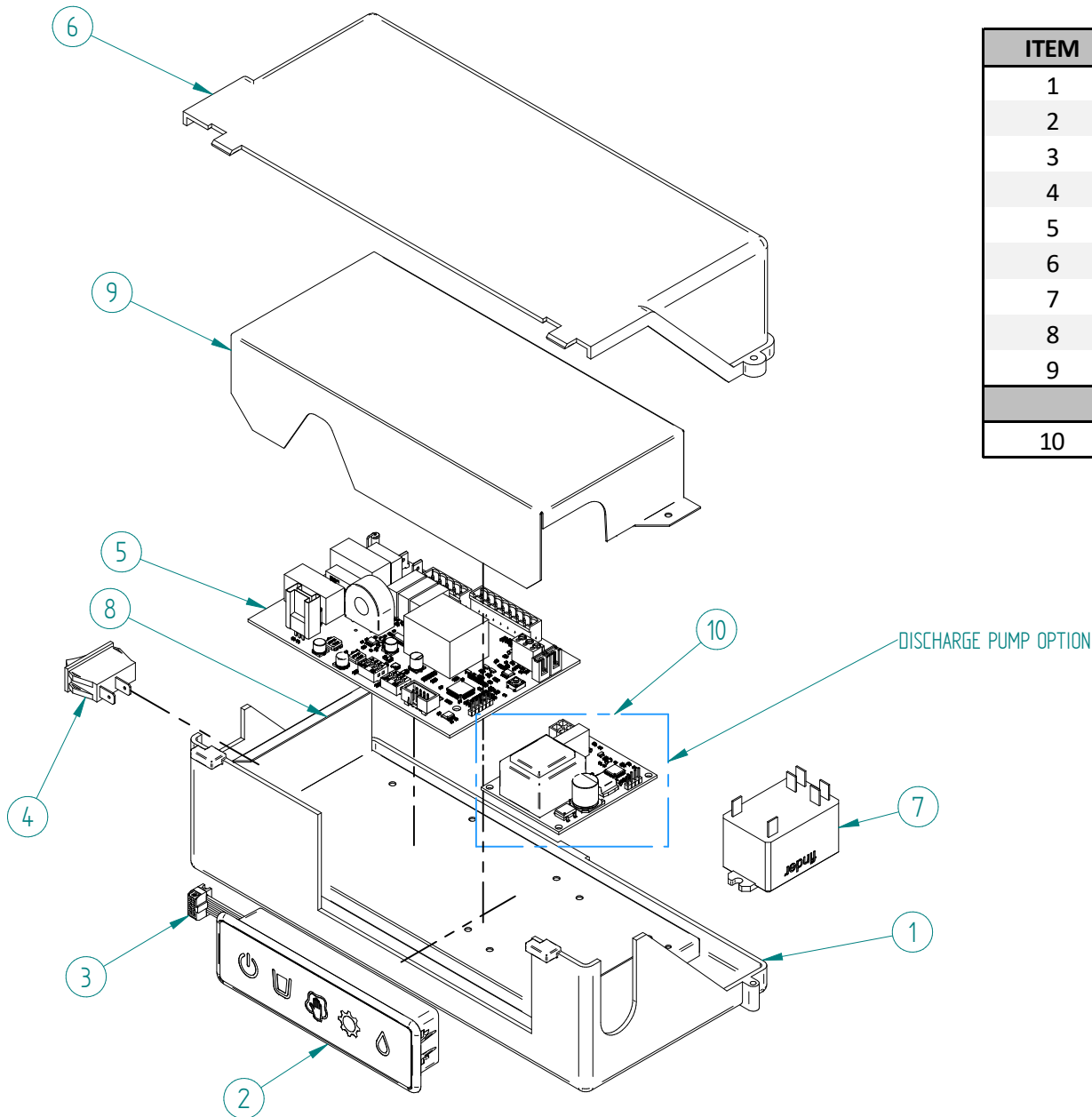


ITEM	DESCRIPTION	CODE
1	DRAIN CONNECTOR	363
2	WATER INLET 220/50-60	220V/50-60HZ
		115V/60HZ
3	WATER TUBE - BIN DRAIN	33766
4	STOCK BIN	35372
5	SWING DOOR	1123
6	JOINT	666
7	THERMOSTAT CUBE	5219
8	WATER TANK	34122
9	O-RING	34150
10	OVERFLOW TUBE	2505
11	WATER TANK COVER	34123
12	WATER TANK ASSEMBLY	34552
13	DRAIN TUBE	35370
14	TUBE EVAPORATOR TANK	35175
15	DRAIN VALVE	220V/50-60HZ
		115V/60HZ
DISCHARGE PUMP OPTION		
16	DISCHARGE PUMP TUBE	35369
17	FORCED DRAIN TUBE DISCHARGE TANK	32636
18	FORCED DRAIN TANK SET	32571
19	FORCED DRAIN TUBE IMPULSION	32457
20	FORCED SUCTION DRAIN TUBE	32455
21	DISCHARGE PUMP	220V/50-60HZ
		115V/60HZ
22	DRAIN CONNECTION	30850

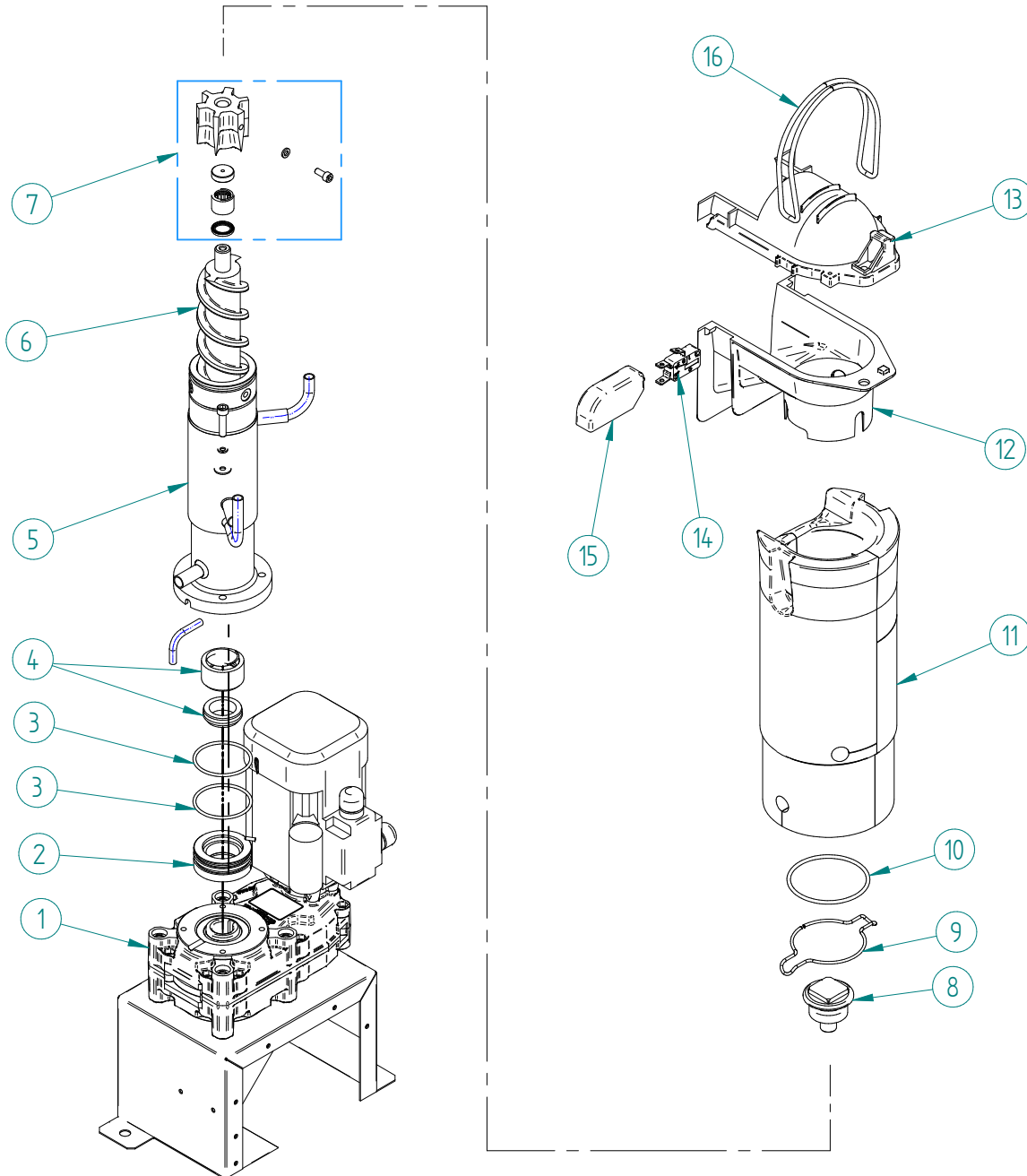


ITEM	DESCRIPCION	CODE	
1	COMPRESSOR*	220V/50HZ	33302
		115V/60HZ	32627
		220/60HZ	32758
2	FILTER DRIER	7896	
3	AIR CONDENSER	486A	
4	FAN BLASE	4887	
5	FAN MOTOR	220V/50-60HZ	28
		115V/60HZ	4890
6	PRESSURE SWITCH COLLECTOR	31444	
7	CONDENSATION PRESSURE SWITCH	31160E	
8	HIGH PRESSURE SWITCH	31660E	
9	CLIP TUBO	3533	

*PROVIDE SERIAL NUMBER



ITEM	DESCRIPTION	CODE
1	PLATE SUPPORT	4791
2	LED PANEL	35260
3	PANEL WIRE	34162
4	SWITCH	2300
5	ELECTRONIC BOARD	33799A
6	ELECTRIC BOX COVER	4790
7	RELAY FINDER (ONLY FOR 115V/60HZ MACHINE)	32501
8	BASE CASE NIQ200 (ONLY FOR 115V/60HZ MACHINE)	35802
9	BOX COVER NIQ200 (ONLY FOR 115V/60HZ MACHINE)	35804
OPCIÓN BOMBA DE DESCARGA		
10	ELECTRONIC BOARD DRAIN FORCE	32568



ITEM	DESCRIPCION	CODE	
1	GEAR MOTOR*	220V/50-60HZ	34652
		115V/60HZ	33833
2	EVAPORATOR SUPPORT	33863	
3	O-RINGS	33868	
4	MECHANICAL CLOSING	33872	
5	WASHER	35285	
6	AUGER	33785	
7	NUGGETS EXTRUDER KIT (IQN) FLAKER EXTRUDER KIT (IQF)	35527	
		35783	
8	NUGGETS ICE BREAKER (IQN) FLAKER ICE BREAKER (IQF)	33865	
		33865	
9	CLAMPING RING	34407	
10	O-RING	33869	
11	EVAPORATOR INSULATION	34775	
12	ICE EXIT	33873	
13	ICE EXIT COVER	33874	
14	ICE FULL MICRO SWITCH	32658	
15	MICRO COVER	30446	
16	O-RING	35564	

*PROVIDE SERIAL NUMBER