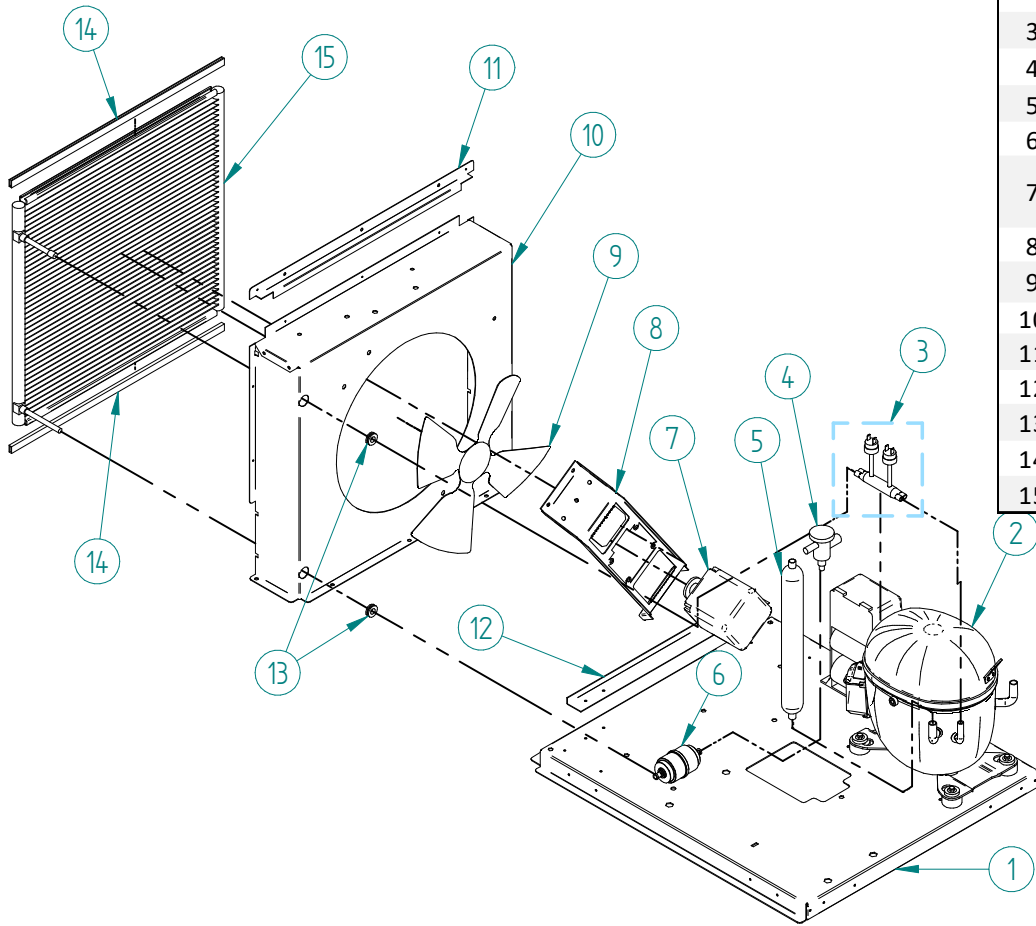


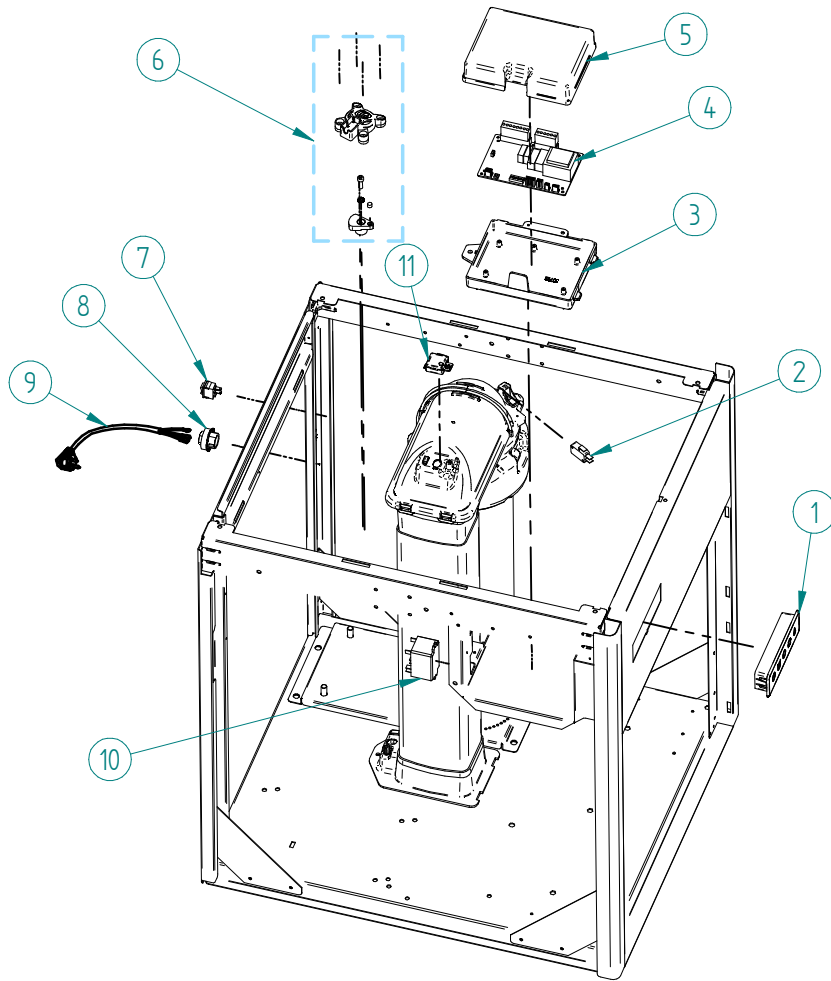
**ITV**  
ICE makers



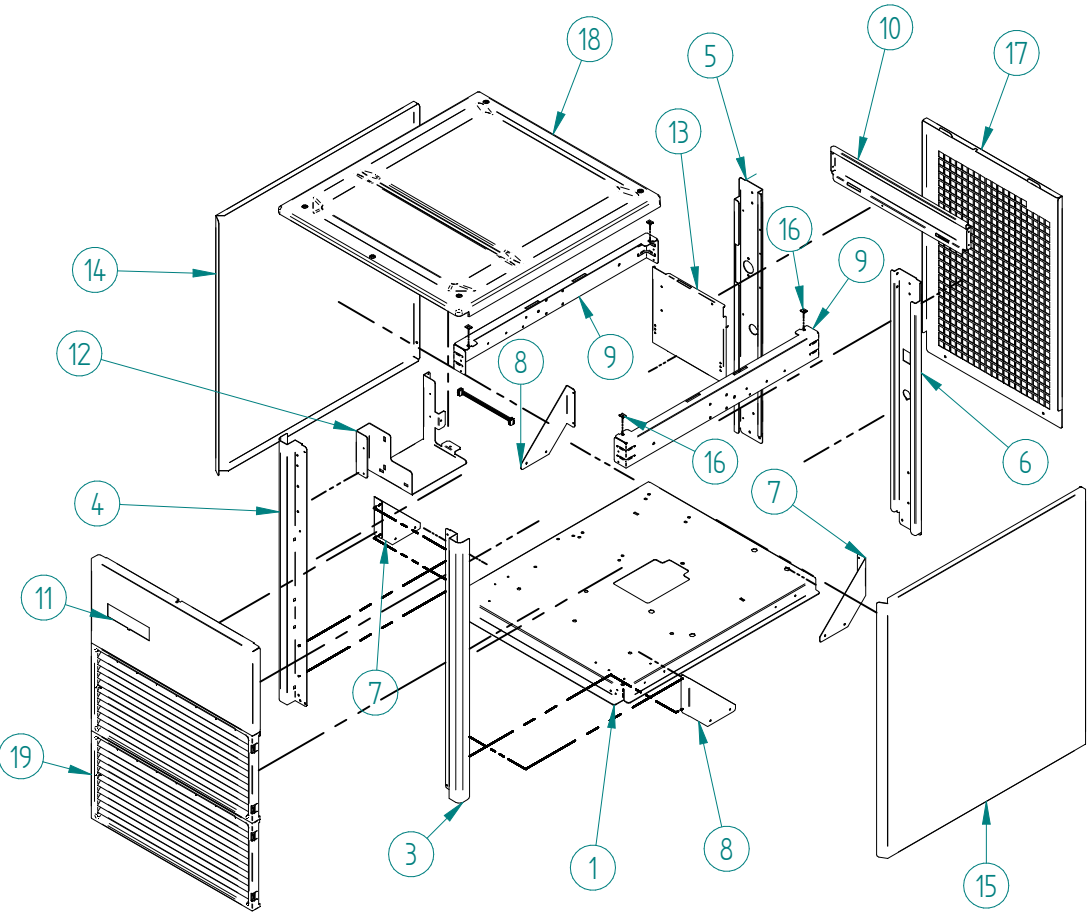
DESPIECE / REPUESTOS  
EXPLODED VIEW / SPARE PARTS  
EXPLOSIONSZEICHNUNG / ERSATZTEILE  
VUE ÉCLATÉE / PIÈCES DÉTACHÉES  
ESPLOSO / RICAMBI



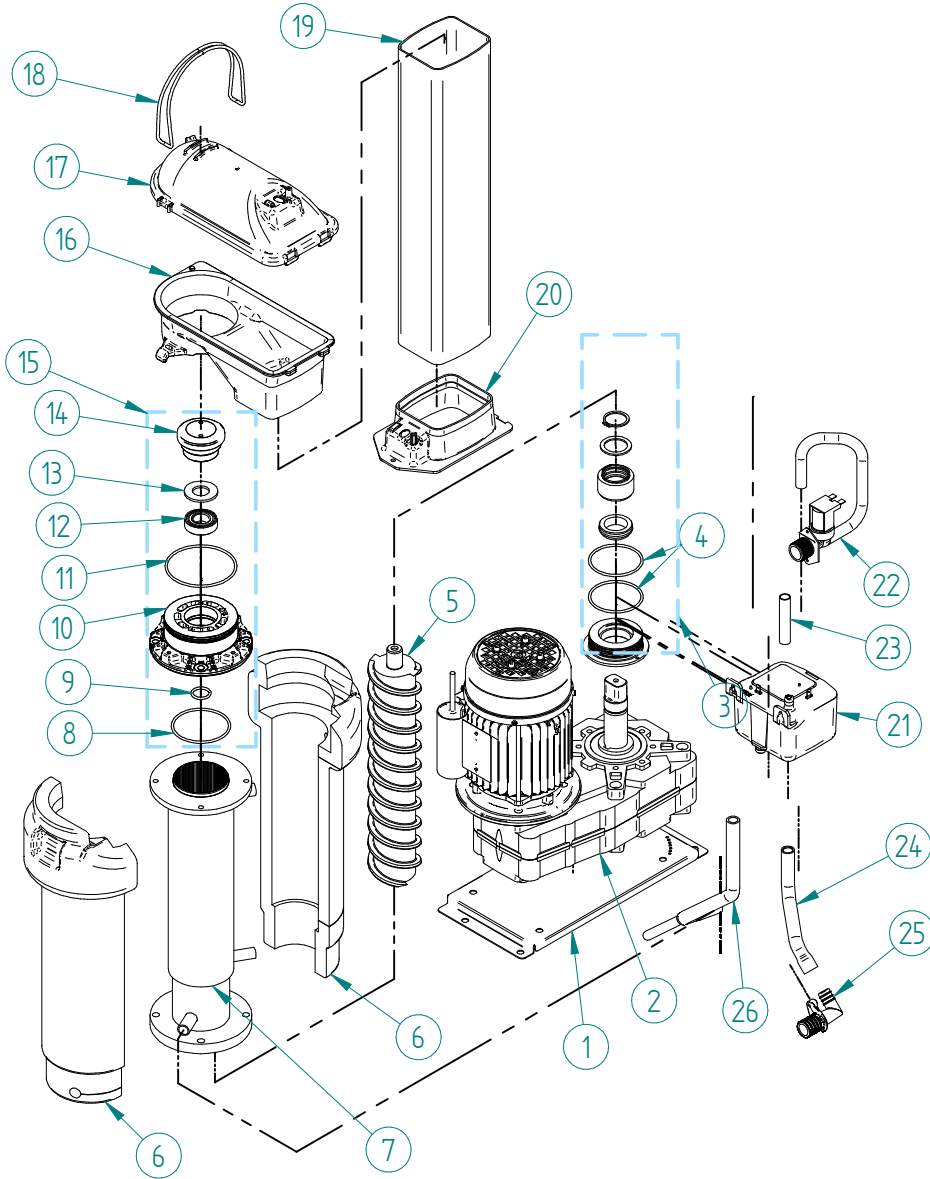
ITEM	DESCRIPTION	IQN/F 300 220V/50HZ	IQN/F 300 115V/60HZ	IQN/F 500 220V/50HZ
1	BENCH	31463K		
2	COMPRESSOR 220V/50HZ	31310	-	32381
	COMPRESSOR 115V/60HZ	-	31457	-
3	PRESSURE SWITCHES KIT	35979		32695K
4	EXPANSION VALVE	31524		32346
5	SUCTION ACCUMULATOR	6805		8185
6	DRIER FILTER	2560		
7	FAN MOTOR 220V/50-60HZ + WIRE	32895+35130		
	FAN MOTOR 115V/60HZ + WIRE			
8	FAN SUPPORT	32653		
9	FAN BLADE	6398		
10	CONDENSER BOX	31748		
11	UPPER CONDENSER REINFORCEMENT	31749		
12	LOWER CONDENSER REINFORCEMENT	31750		
13	RUBBER GROMMET	31746		
14	RUBBER REINFORCEMENT	31747		
15	CONDENSER	31683		



ITEM	DESCRIPTION	IQN/F 300	IQN/F 300	IQN/F 500
		220V/50HZ	115V/60HZ	220V/50HZ
1	LED PANEL	30566A		
2	ICE FULL MICRO SWITCH	32658		
3	ELECTRIC BOX	30792		
4	ELECTRONIC BOARD 220V/50-60HZ	30564C	-	30564C
	ELECTRONIC BOARD 115V/60HZ	-	30565C	-
5	ELECTRIC BOX COVER	31274		
6	ROTATION SENSOR KIT	30568K		
7	SWITCH	32416		
8	CABLE RESTRAINER	4907		
9	POWER CORD	408	-	408
		-	2771	-
10	RELAY 220V/50-60HZ	32502	-	32502
	RELAY 115V/60HZ	-	32501	-
11	STOCK ICE SENSOR	31261		



ITEM	DESCRIPTION	IQN/F 300	IQN/F 300	IQN/F 500
		220V/50HZ	115V/60HZ	220V/50HZ
1	BENCH		31463K	
2	OMEGA BENCH		31504	
3	RIGHT SUPPORT		31464	
4	LEFT SUPPORT		31465	
5	LEFT REAR SUPPORT		31467	
6	RIGHT REAR SUPPORT		31466U	
7	SUPPORT REINFORCEMENT		31468	
8	SUPPORT REINFORCEMENT		31469	
9	SIDE REINFORCEMENT		31470	
10	REAR SUPPORT REINFORCEMENT		31472	
11	TOP SUPPORT		31473	
12	ELECTRICAL BOX SUPPORT		31483	
13	WATER BIN SUPPORT	31477		32500
14	LEFT PANEL		31475	
15	RIGHT PANEL		31474	
16	NUT		311	
17	REAR PANEL		31476	
18	TOP PANEL		30423	
19	AIR GRID		4186	



ITEM	DESCRIPTION	IQN/F 300	IQN/F 300	IQN/F 500
		220V/50HZ	115V/60HZ	220V/50HZ
1	GEAR MOTOR SUPPORT (*consult serial number)		31484 / 33672	
2	GEAR MOTOR (*consult serial number)	30562 / 30889	30563B / 33676A	30249 / 30356
3	EVAPORATOR SUPPORT KIT		30435K	32368K
4	O-RING		30492	32369
5	AUGER		30436	30006
6	EVAPORATOR INSULATION		31247	31777
7	EVAPORATOR		31604	32374
8	O-RING		30496	8954
9	O-RING		30494A	8953A
10	FLAKER EXTRUDER (IQF)		30589	31245A
10	NUGGETS EXTRUDER (IQN)		31242	31244A
11	O-RING		8954	
12	BEARING		30495	32370
13	FLAT WASHER		30577	32371
14	FLAKER ICE BREAKER (IQF)		30590	31425
14	NUGGETS ICE BREAKER (IQN)		30444	31424
15	CONVERSION KIT OF IQN INTO IQF		32956	32958
15	CONVERSION KIT OF IQF INTO IQN		32957	32959
16	ICE EXIT		30452	
17	ICE EXIT COVER		30445A	
18	O-RING		30499A	
19	ICE EXIT CHUTE		33266	33267
20	ICE EXIT CHUTE SUPPORT		30791	
21	TANK WATER		34552	
22	WATER INLET 220V/50-60HZ	31780	-	31780
22	WATER INLET 115V/60HZ	-	31779	-
23	OVERFLOW TUBE		31781	
24	DRAIN PIPE		30856	
25	DRAIN CONNECTOR		30850	
26	WATER INLET PIPE		30855	