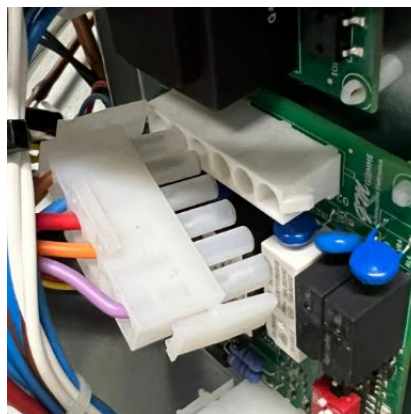


Subject: Replace electronic board?**Models: NG**

IMPORTANT: Disconnect the machine from the power supply. In case of replacement, it is advisable to previously take photos of how the item to be replaced is installed/located, in order to facilitate its start-up later.

1- Remove the front grille/panel. Remove the cover of the electrical switchboard and we will have full access to the board.

2- Disconnect the wiring and remove the board by pressing the rivets that hold it in place and install the new board by reconnecting the wiring.



NOTE: It is convenient to take pictures of the connections to be able to make them correctly once the new one is installed.