

ITV Ice Makers ice machine Spika MS

Cleaning and sanitation

Frequency:

Biweekly

Models:

MS 220 / MS 410

Estimated time to complete:

90 min

Health and safety hazards



Chemical products



slippery floors

Food safety



Wash your hands after this task.



Make sure nuts, screws and bolts are tight

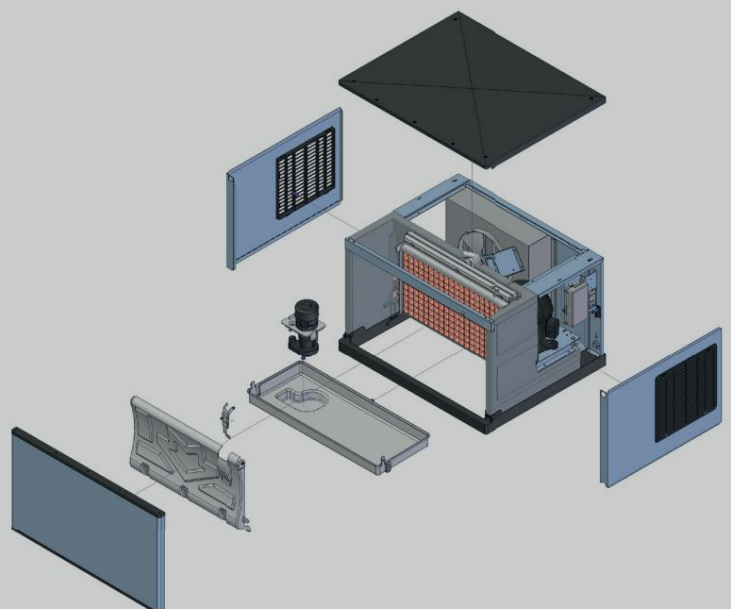


Inspect equipment.
Do not use them if they are damaged.

Equipment




1. Flat and Philips screwdriver
2. Calkin descaler and sanitizer
3. Measuring cup
4. Hot water
(5L for MS220 / 8L for MS410)
5. Cleaning cloth





1



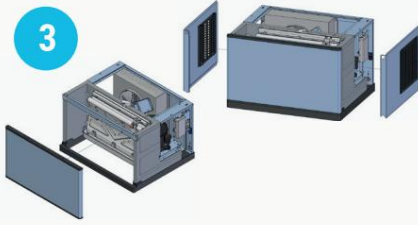
Remove ice from the tank.

2



Remove the machine cover by removing the 5 screws.

3



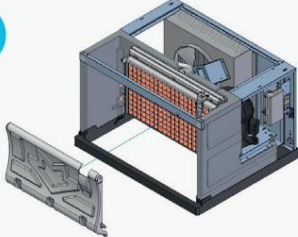
Once the cover is removed, the sides and front panel are free and can be removed.

4




Remove the water tray.

5



Remove the curtain.

6



Prepare the solution with CALKLIN with hot water (40°C) to carry out the cleaning process. Necessary quantity depending on model (see page 1).

7



Wipe a cloth wet with the CALKLIN solution over all the walls and components that are in contact with water and where traces of lime or dirt are visible.

8



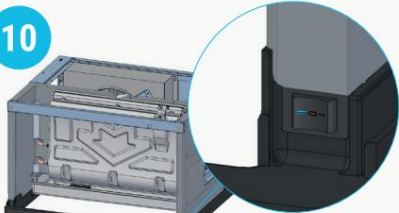
Reinstall the tray

9



Install the curtain.

10



Place the switch in position (II) cleaning

11




Connect the machine to the rear main switch.

12



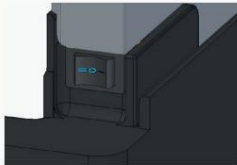
Pour the solution into the tray.

13



Leave in the cleaning process for 30 minutes

14



Turn the cleaning switch (II) to position 0 and return to cleaning (II) to fill again with clean water and rinse the circuit.

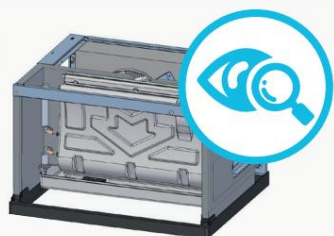
15



Turn the switch to 0 and the tank will automatically be emptied.



16



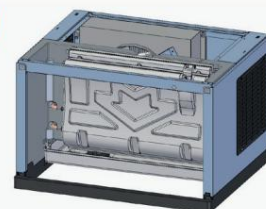
Check the state of dirt in the machine

17



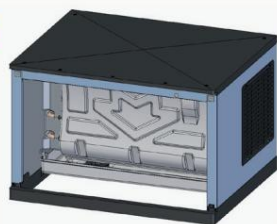
If there are remains, repeat the entire process from point 5.

18



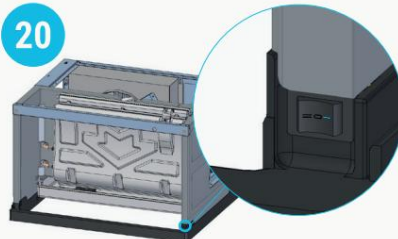
If everything is clean, place the sides in their location.

19



Install the cover

20



Turn the switch to the ICE position (I)

21



Discard the first two batches of ice

22

Sanitización

23



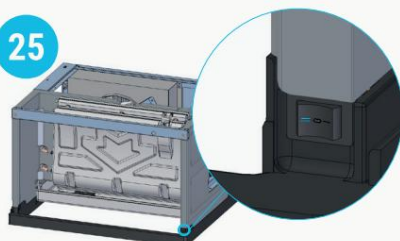
Remove manufactured ice

24



Prepare a solution with 4 liters of water and sanitizer.

25



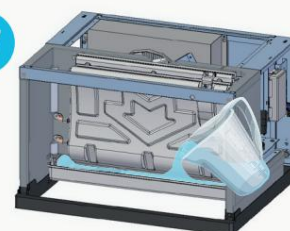
Place the switch in position (II)
Cleaning.

26



Connect the machine to the main switch.

27



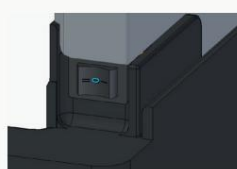
Add the solution with the sanitizing product.

28



Leave on for 30 minutes.

29



Turn the cleaning switch to position 0. The water tray will be emptied.

30



Turn the cleaning switch to position (I) and discard the first 2 ice cycles.