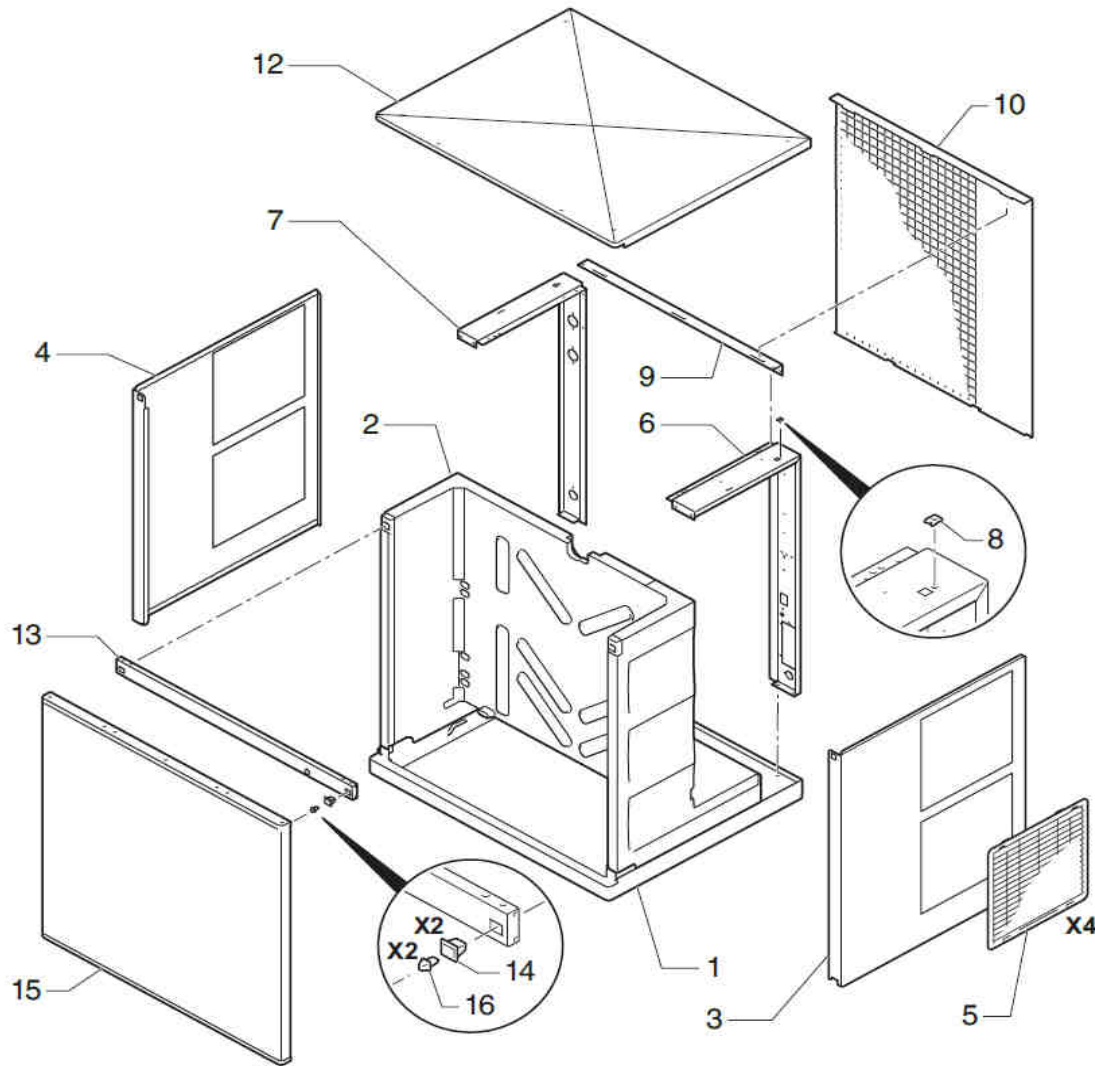


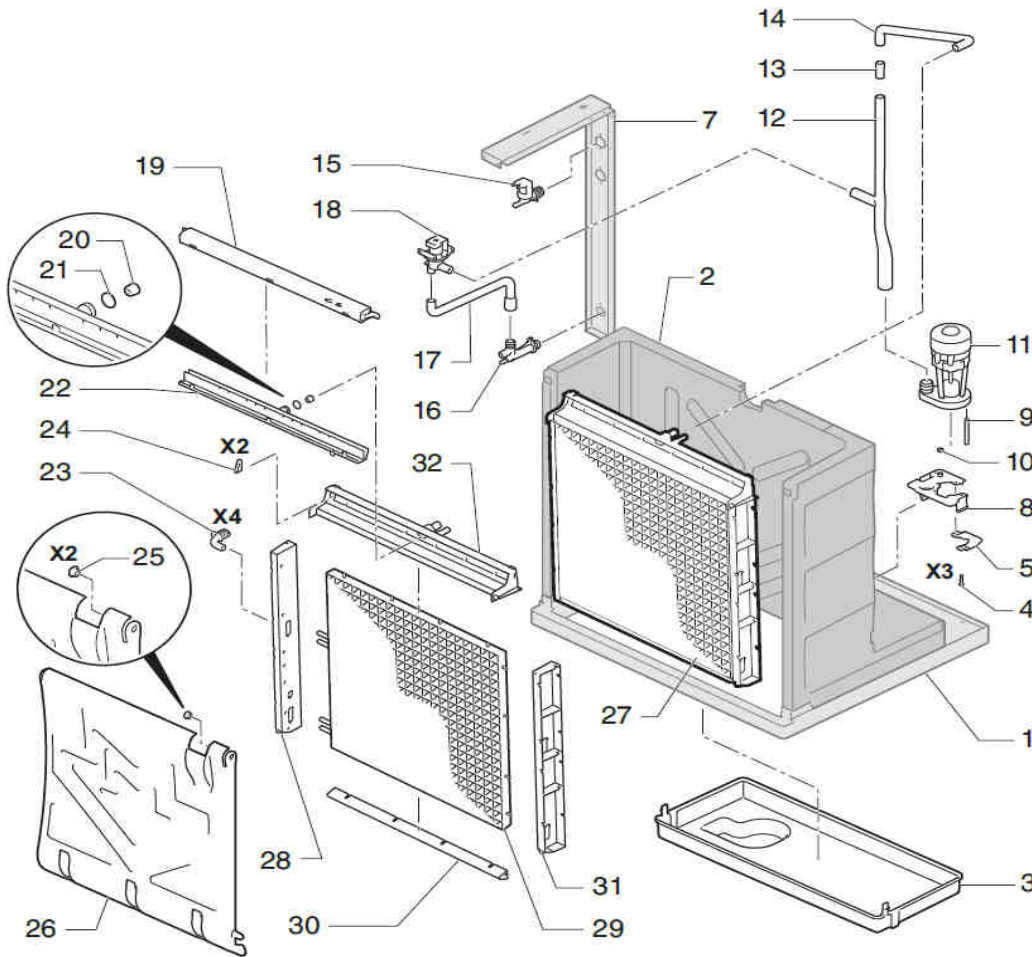
ITV
ICE makers



DESPIECE / REPUESTOS
EXPLODED VIEW / SPARE PARTS
EXPLOSIONSZEICHNUNG / ERSATZTEILE
VUE ÉCLATÉE / PIÈCES DÉTACHÉES
ESPLOSO / RICAMBI



| | DESCRIPTION | MODEL | |
|----|--------------------|--------|--------|
| | | MS 220 | MS 410 |
| 1 | BASE PLAT | 6074 | 6074 |
| 2 | INSULATED BODY | 6342 | 6343 |
| 3 | RIGHT SIDE PANEL | 6327 | 6329 |
| 4 | LEFT SIDE PANEL | 6328 | 6330 |
| 5 | SIDE GUARD | 6084 | 6084 |
| 6 | RIGHT BRACKET | 6319 | 6320 |
| 7 | LEFT BRACKET | 6325 | 6324 |
| 8 | FAST NUT | 311 | 311 |
| 9 | UPPER REAR BRACKET | 6321 | 6321 |
| 10 | REAR PANEL | 6315 | 6316 |
| 12 | TOP PANEL | 6073 | 6073 |
| 13 | FRONT BRACKET | 6331 | 6331 |
| 14 | FEMALE PANEL CLIP | 6180 | 6180 |
| 15 | FRONT PANEL | 6269 | 6270 |
| 16 | MALE PANEL CLIP | 6181 | 6181 |



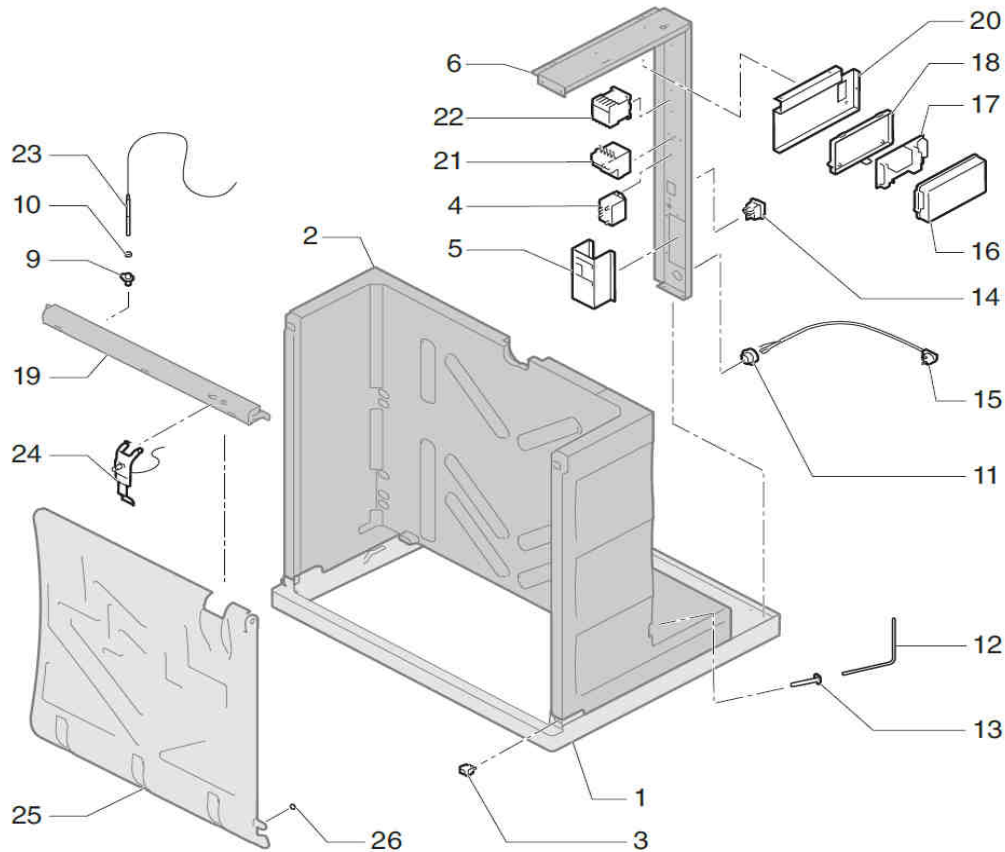
| DESCRIPTION | MODEL | |
|--|--------|--------|
| | MS220 | MS410 |
| 1 BASE PLATE | 6074 | 6074 |
| 2 INSUALTED BODY | 6342 | 6343 |
| 3 WATER BIN | 6078 | 6078 |
| 4 INOX SCREW M5x20 | 7931 | 7931 |
| 5 PUMP BRACKET TERMINATION | 6106 | 6106 |
| 7 LEFT BRIDGE | 6325 | 6324 |
| 8 PUMP BRACKET | 6079 | 6079 |
| 9 PUMP EARTHING CABLE | 6454 | 6454 |
| 10 COMPRESSING RING | 504 | 504 |
| 11 WATER PUMP | 6509 | 6509 |
| 12 BOTTOM TUBE | 6130 | 6130 |
| 13 CONNECTION TUBE | 6526 | 6526 |
| 14 TOP TUBE | 6129 | 6129 |
| 15 WATER VALVE 220V/50-60HZ | 7688 | 7688 |
| 15 WATER VALVE 220V/50-60HZ water cooled | 329 | 7688 |
| 15 WATER VALVE 220V/50-60HZ UL | - | 8963 |
| 16 DRAIN MANIFOLD | 6206 | 6206 |
| 17 DRAIN TUBE | 6131 | 6131 |
| 18 WATER DRAIN VALVE 220V/50-60HZ | 6183 | 6183 |
| 19 DISTRIBUTOR COVER | 30039 | 30039 |
| 19 GREY DISTRIBUTOR COVER | 30039G | 30039G |
| 20 FLOW REDUCER 7MM | 6414 | 6141 |
| 21 FLOW REDUCER 9MM | 6485 | 6485 |
| 21 O-RING | 4496 | 4496 |
| 22 DISTRIBUTOR | 30039 | 30039 |
| 22 GREY DISTRIBUTOR | 30039G | 30039G |
| 23 TUBE PROTECTION | 6132 | 6132 |
| 24 DISTRIBUTOR GASKET | 6456 | 6456 |
| 25 BEARING | 1001 | 1001 |
| 26 CURTAIN | 6081 | 6080 |
| 27 COMPLETE EVAPORATOR DICE 1" | 6337 | 6339 |
| 27 COMPLETE EVAPORATOR DICEO 1/2" | 6338 | 6340 |
| 28 EVAPORATOR LEFT PANEL | 2982 | 2978 |
| 29 NICKEL-PLATED EVAPORATOR DICE 1" | 5747 | 5753 |
| 29 NICKEL-PLATED EVAPORATOR DICE 1/2" | 5744 | 5750 |
| 30 EVAPORATOR BOTTOM PANEL | 6086 | 6086 |
| 31 EVAPORATOR RIGHT PANEL | 2981 | 2977 |
| 32 EVAPORATOR TOP PANEL | 6085 | 6085 |

ELECTRIC BOX

220 / 410



SPIKA MS



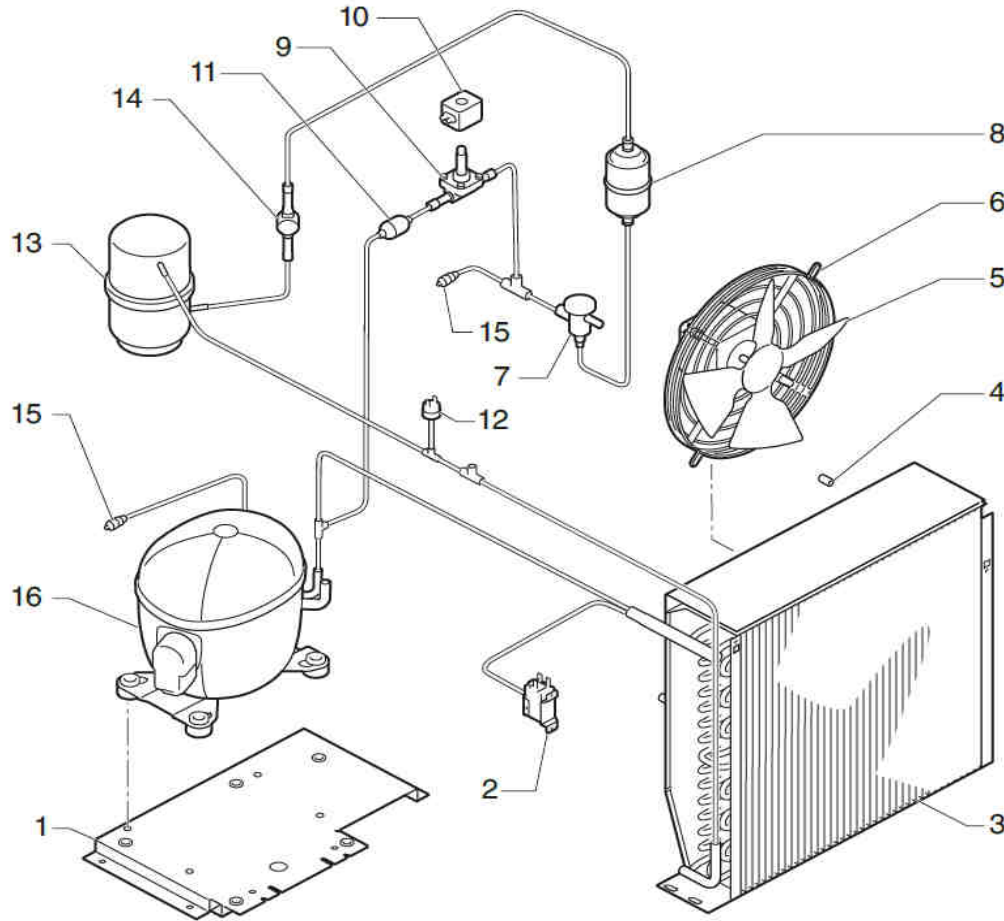
| | DESCRIPTION | MODEL | |
|----|--------------------------------------|--------|--------|
| | | MS 220 | MS 410 |
| 1 | BASE PLATE | 6074 | 6074 |
| 2 | INSULATED BODY | 6342 | 6343 |
| 3 | SWITCH (ICE-OFF-WASH) | 6161 | 6161 |
| 4 | STARTER RELAY 220V | 2968 | 2968 |
| 5 | ELECTRICAL BOX (3 PHASE) | - | 6322 |
| 6 | RIGHT BRIDGE | 6319 | 6320 |
| 9 | LEVEL PROBE BRACKET | 8670 | 8670 |
| 10 | COMPRESSING RING | 504 | 504 |
| 11 | CABLE RESTRAINT | 4907 | 4907 |
| 12 | CURTAIN PROBE | 6521 | 6521 |
| 13 | CURTAIN PROBE BLOCK | 8671 | 8671 |
| 14 | ON/OFF SIWTCH | 2287 | 2287 |
| 15 | ELECTRIC SUPPLY WIRE 220V/50-60HZ | 408 | 2124 |
| | ELECTRIC SUPPLY WIRE 220V/60HZ | - | 3675 |
| 16 | ELECTRIC BOX COVER | 30861 | 30861 |
| 17 | ELECTRONIC BOARD 220V/50-60HZ | 6252A | 6252A |
| | ELECTRONIC BOARD BEFORE S/N 17736480 | 30922 | 30922 |
| 18 | ELECTRIC BOX | 2181 | 2181 |
| 19 | DISTRIBUTOR COVER | 30039 | 30039 |
| 20 | ELECTRIC BOX BRACKET | 6138 | 6138 |
| 21 | THERMAL RELAY (3 PHASE) | - | 3022 |
| 22 | CONTACTOR (3 PHASE) | - | 536 |
| 23 | WATER LEVEL PROBE | 30982 | 30982 |
| 24 | THICKNESS ICE PROBE | 6334 | 6334 |
| 25 | CURTAIN | 6081 | 6080 |
| 26 | MAGNET | 6179 | 6179 |

AIR CONDENSER

220 / 410



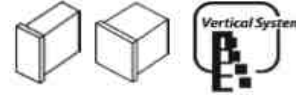
SPIKA MS



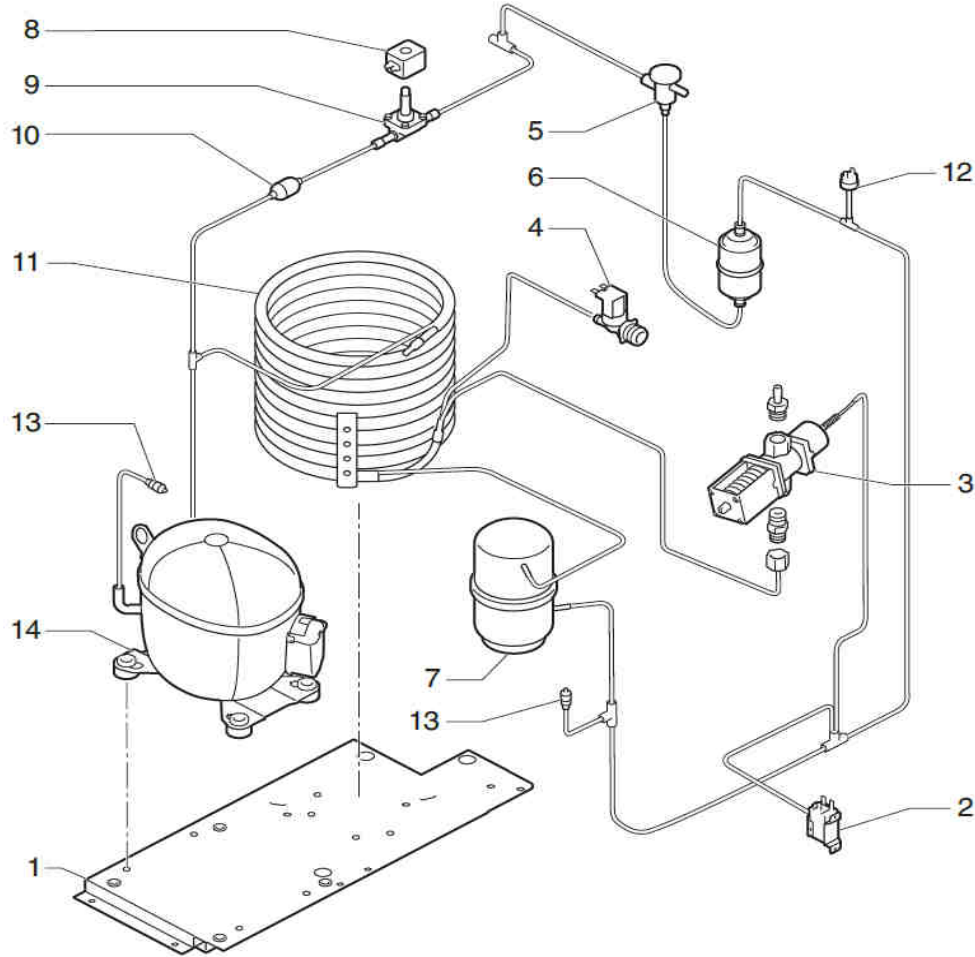
| | DESCRIPTION | MODEL | |
|----|---------------------------------|--------|--------|
| | | MS 220 | MS 410 |
| 1 | BASE PLATE | 6326 | 6326 |
| 2 | CONDENSATION PRESSURE SWITCH | 2507 | 2507 |
| 3 | AIR CONDENSER | 6156 | 6157 |
| 4 | FAN BLADE SUPPORT | 6500 | 6501 |
| 5 | FAN BLADE 220/380V 50HZ | 4994 | 6557 |
| | FAN BLADE 203-230V/3ph/60HZ | - | 6398 |
| 6 | FAN BLADE 220V/50-60HZ | 3077 | 2446 |
| | FAN BLADE 203-230V/3ph/60HZ | - | 4894 |
| 7 | EXPANSION VALVE | 1035 | 1035 |
| 8 | DRIER FILTER | 2560 | 2560 |
| 9 | HOT GAS VALVE | 6396 | 843 |
| 10 | COIL 220V/50-60HZ | 5173 | 5173 |
| 12 | HIGH PRESSURE SWITCH | 334 | 334 |
| 13 | PRESSURE TANK (UNLISTED MODELS) | 6241 | 6241 |
| 14 | SIGHT (UNLISTED MODELS) | 336 | 336 |
| 15 | LOAD VALVE | 335 | 335 |
| 16 | COMPRESSOR | | |
| | 220V/50HZ | 6008 | 8450 |
| | 220V/60HZ | 31099 | 8304 |
| | 220V/60HZ/3PH | - | 6569 |
| | 380V/50HZ/3PH | - | 3214 |

WATER CONDENSER

220 / 410



SPIKA MS



| | DESCRIPTION | MODEL | | |
|----|------------------------------|---------------|--------|------|
| | | MS 220 | MS 410 | |
| 1 | PLATE BASE | 6326 | 6326 | |
| 2 | CONDENSATION PRESSURE SWITCH | 2507 | - | |
| 3 | PRESSURE SWITCH VALVE | - | 425 | |
| 4 | WATER VALVE 220V/50-60HZ | 6183 | 6183 | |
| 5 | EXPANSION VALVE | 1035 | 1035 | |
| 6 | DRIER FILTER | 2560 | 2560 | |
| 7 | PRESSURE TANK | 6241 | 6241 | |
| 8 | HOT GAS VALVE | 6396 | 843 | |
| 9 | COIL 220V/50-60HZ | 5173 | 5173 | |
| 11 | WATER CONDENSER | 5246 | 3268 | |
| 12 | HIGH PRESSURE SWITCH | 334 | 334 | |
| 13 | LOAD VALVE | 335 | 335 | |
| | COMPRESSOR | | | |
| | | 220V/50HZ | 6008 | 8450 |
| 14 | | 220V/60HZ | 31099 | 8304 |
| | | 220V/60HZ/3PH | - | 6569 |
| | | 380V/50HZ/3PH | - | 3214 |