

7536 (20-30-40)
7537 (40S-50)
7538 (60)
7539 (90)
7559 (130)

597 (30)
58 (40-40S-50)
59 (60)
60 (90)
2073 (130)

1778 (20)
1779 (30)
1780 (40)
1781 (40S-60)
1782 (60)
1783 (90)
2079 (130)

7510 (20)
7511 (30)
7512 (40)
7513 (40S-60)
7514 (60)
7515 (90)
7516 (130)

1946 (20-30-40)
1961 (40S-50-60)
1998 (90)
1999 (130)

1676 (20)
1678 (30)
1680 (40)
1682 (40S-50)
1684 (60-90-130)

1701 (20-30-40)
1707 (40S...130)

1755 (20)
1756 (30)
1757 (40)
1758 (40S-60)
1759 (60)
1760 (90)
2076 (130)

1761 (20-30-40)
1762 (40S-60)
1763 (60)
1764 (90)
2077 (130)

7578 (20-30-40)
7579 (40S-50)
7580 (60)
7581 (90)
7583 (130)

1700 (20-30-40)
1706 (40S...130)

312
1715

1675 (20)
1677 (30)
1679 (40)
1681 (40S-50)
1683 (60-90-130)

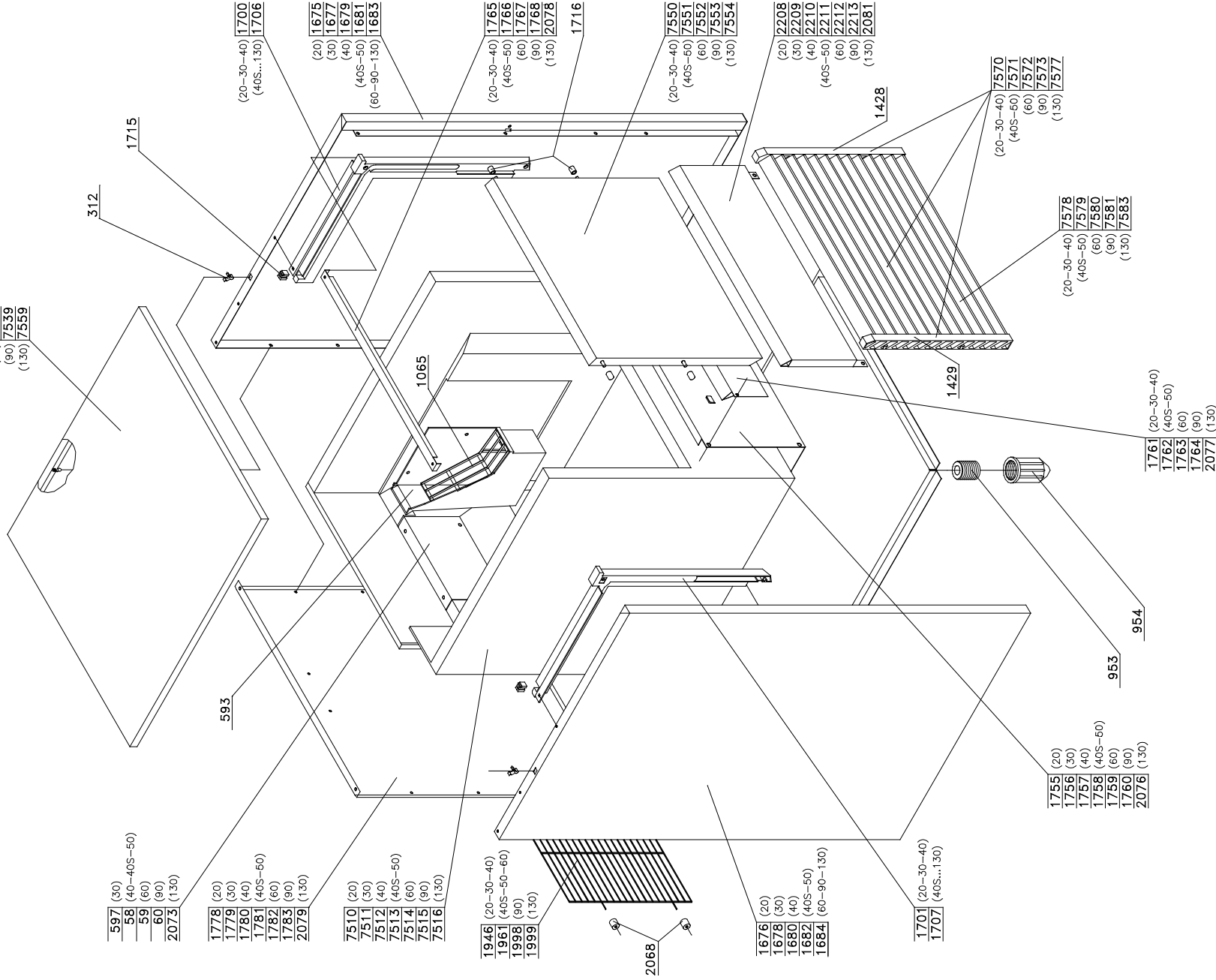
1765 (20-30-40)
1766 (40S-60)
1767 (60)
1768 (90)
2078 (130)

1716

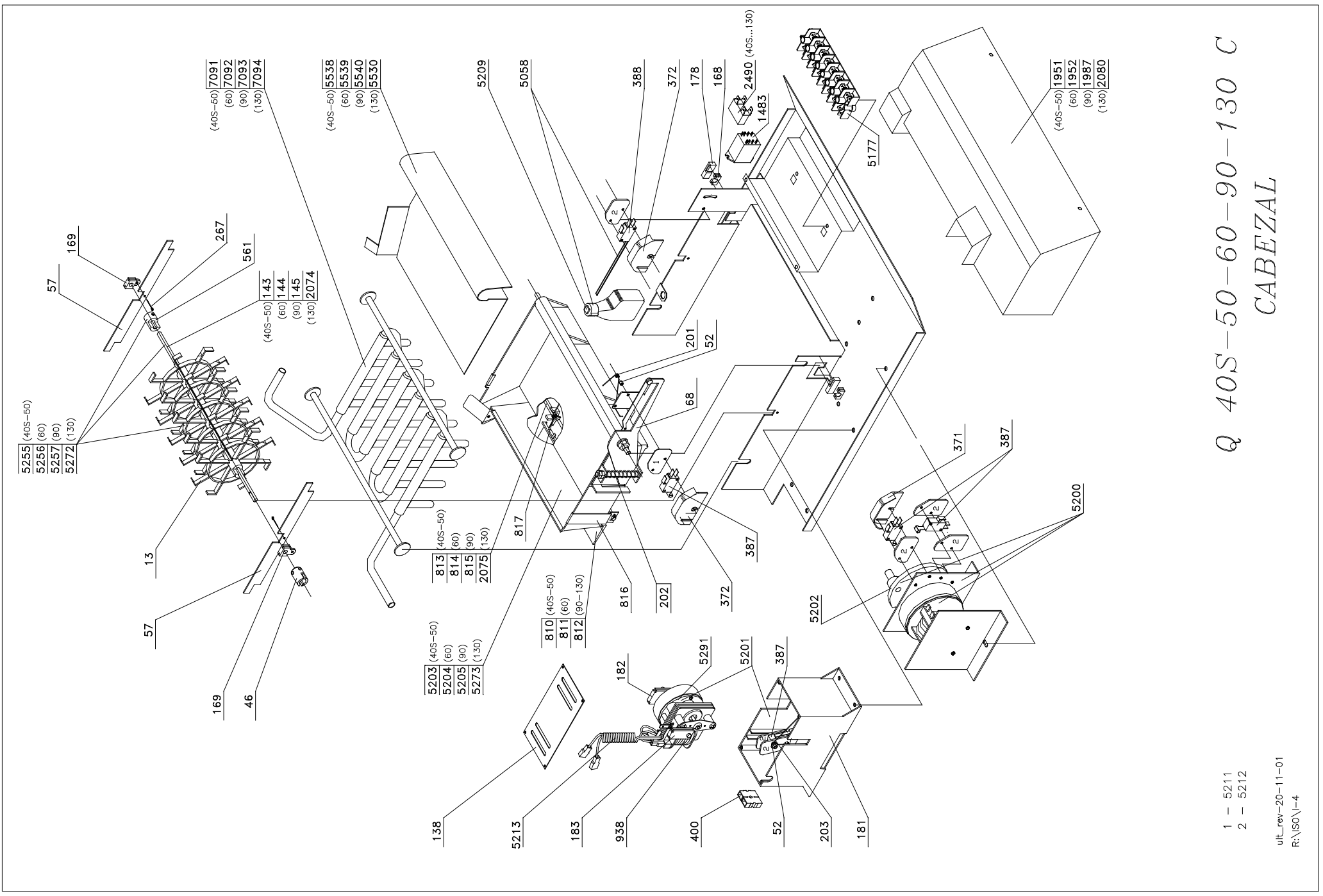
7550 (20-30-40)
7551 (40S-60)
7552 (60)
7553 (90)
7554 (130)

2208 (20)
2209 (30)
2210 (40)
2211 (40S-50)
2212 (60)
2213 (80)
2081 (130)

7570 (20-30-40)
7571 (40S-60)
7572 (60)
7573 (90)
7577 (130)



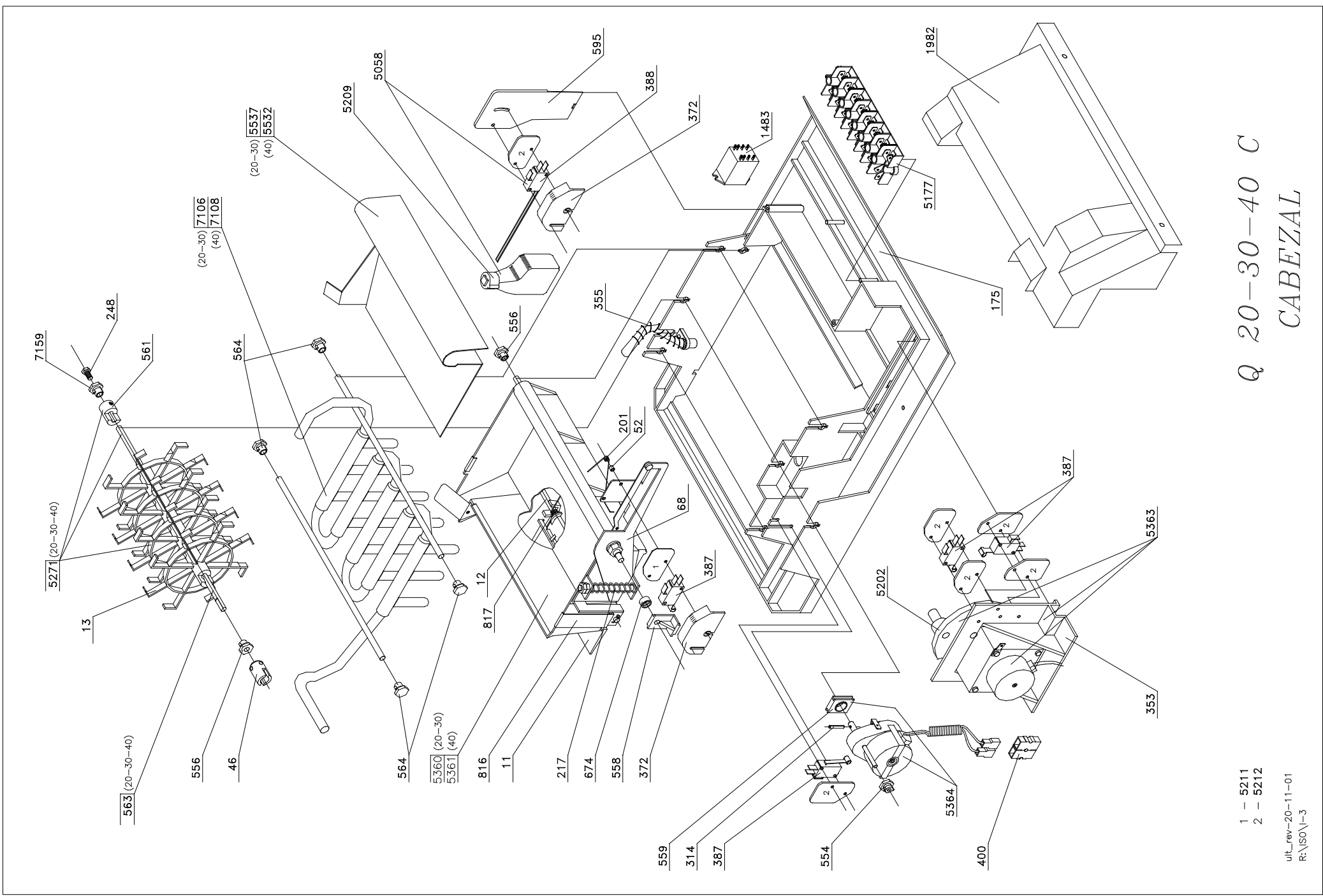
*Q 20-30-40-
 -40S-50-60-90-130 C
 CARROCERIA*



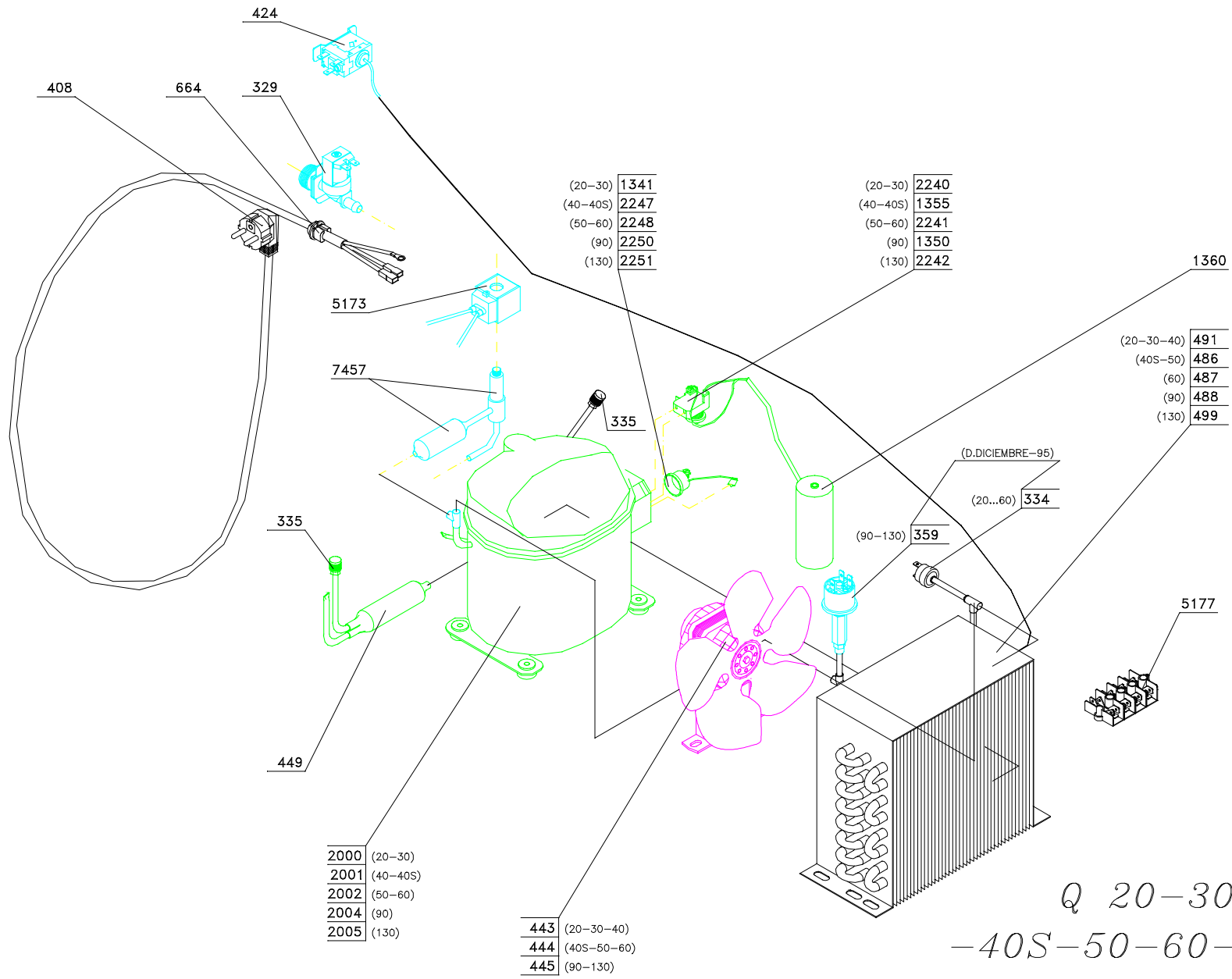
1 - 5211
2 - 5212

util_rev-20-11-01
R:\ISO\I-4

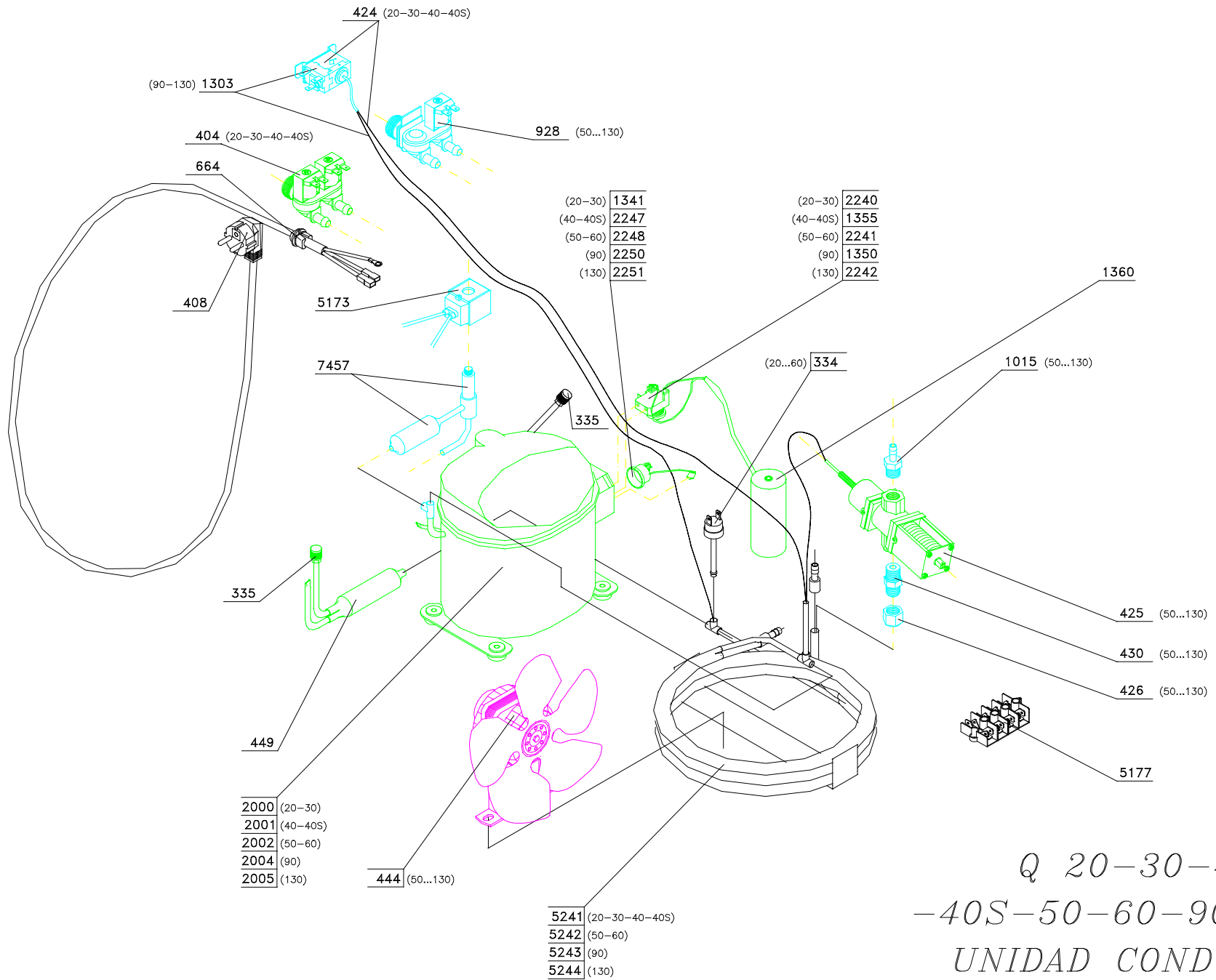
Q 40S-50-60-90-130 C
CABEZAL



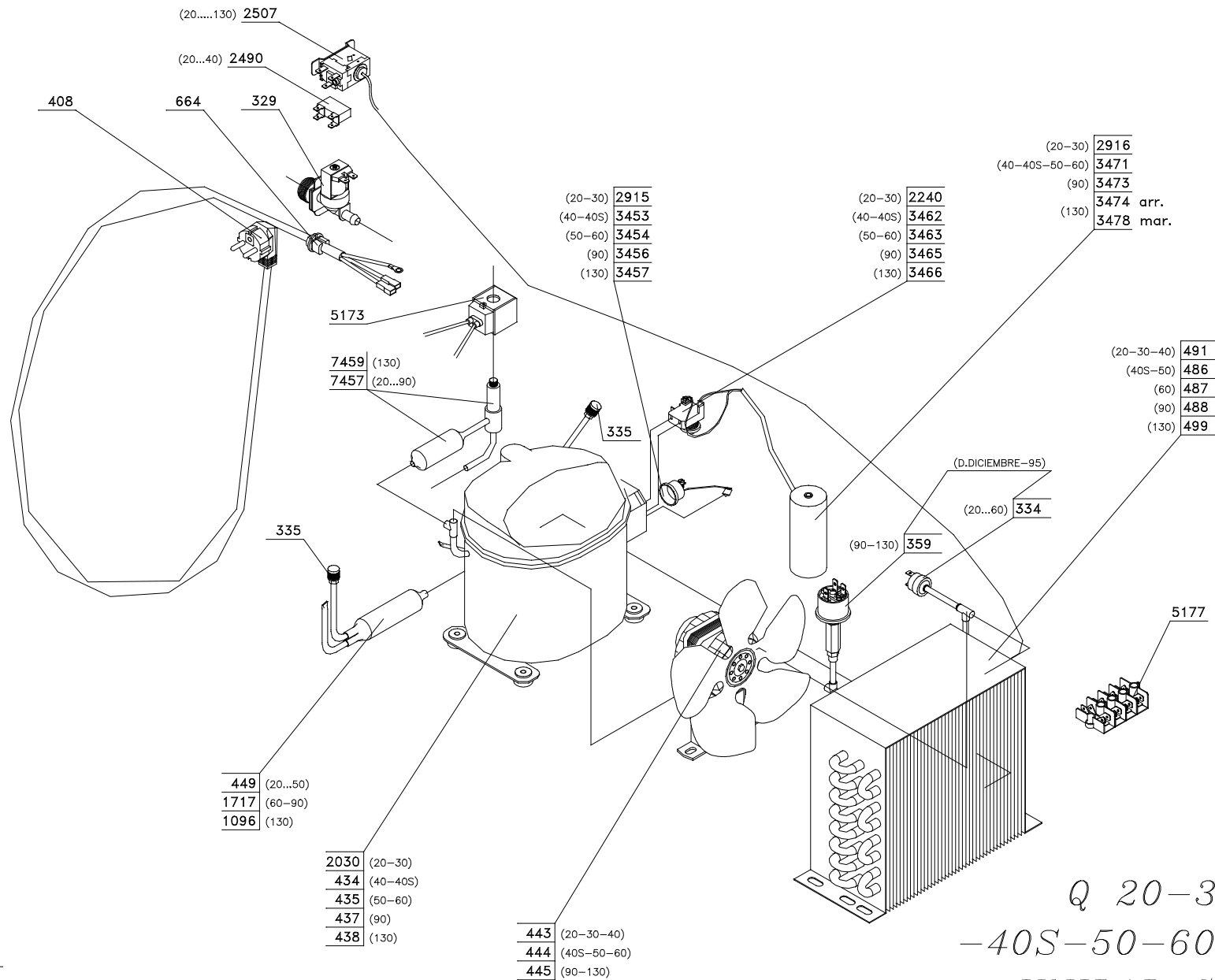
Q 20-30-40 C
CABEZAL



Q 20-30-40-
 -40S-50-60-90-130 C
 UNIDAD COND.AIRE



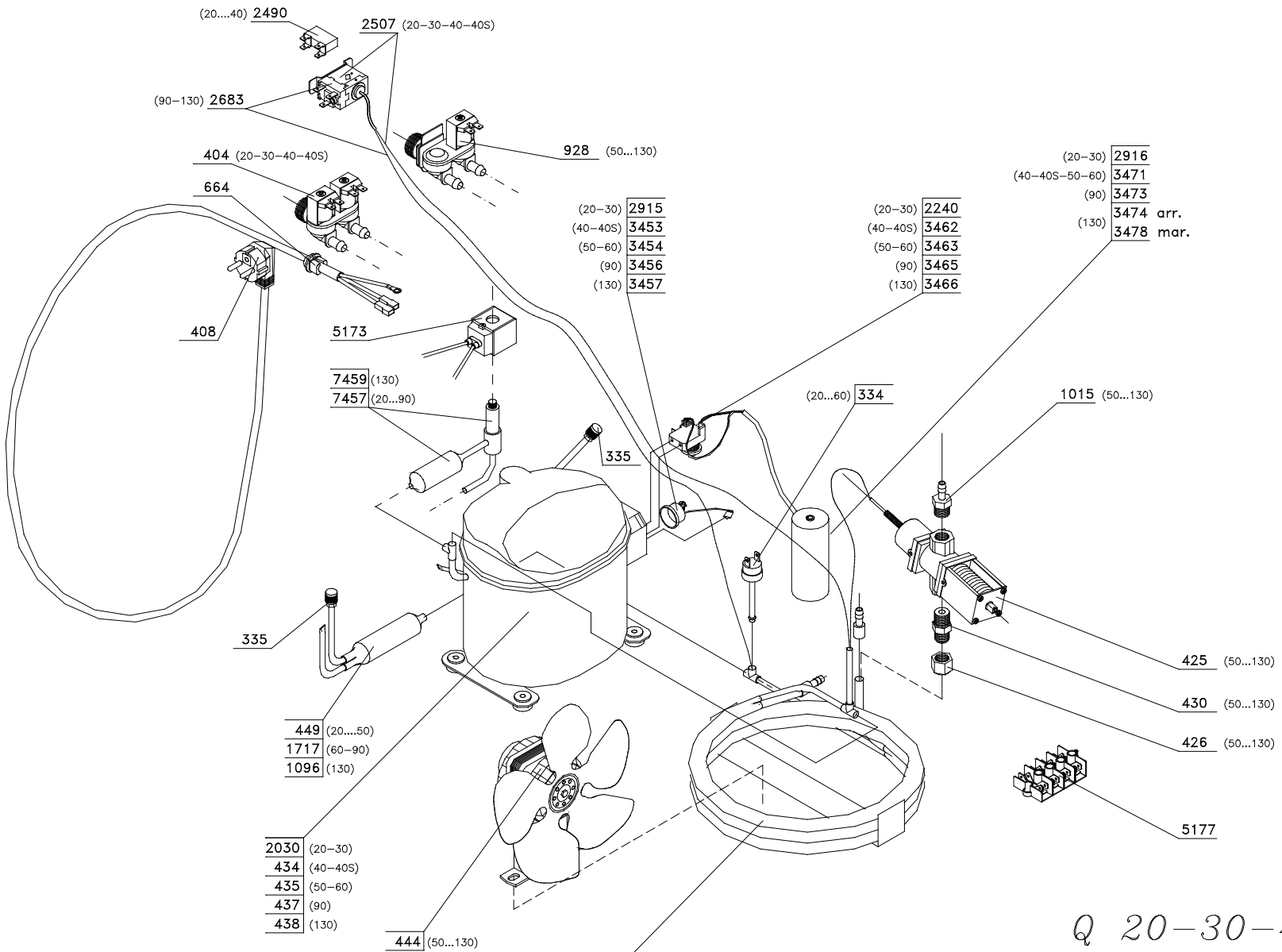
Q 20-30-40-
-40S-50-60-90-130 C
UNIDAD COND.AGUA



Q 20-30-40-
 -40S-50-60-90-130 C
 UNIDAD COND.AIRE

R-404

ult_rev-12-03-04
 R:\ISO\7



(20...40) **2490**
2507 (20-30-40-40S)

(90-130) **2683**

404 (20-30-40-40S) **928** (50...130)

664

(20-30) **2915**
 (40-40S) **3453**
 (50-60) **3454**
 (90) **3456**
 (130) **3457**

(20-30) **2240**
 (40-40S) **3462**
 (50-60) **3463**
 (90) **3465**
 (130) **3466**

(20-30) **2916**
 (40-40S-50-60) **3471**
 (90) **3473**
 (130) **3474** arr.
3478 mar.

408

5173

7459 (130)
7457 (20...90)

335

(20...60) **334**

1015 (50...130)

335

425 (50...130)

430 (50...130)

426 (50...130)

449 (20...50)
1717 (60-90)
1096 (130)

5177

2030 (20-30)
434 (40-40S)
435 (50-60)
437 (90)
438 (130)

444 (50...130)

5241 (20-30-40-40S)
5242 (50-60)
5243 (90)
5244 (130)

*Q 20-30-40-
 -40S-50-60-90-130 C
 UNIDAD COND.AGUA*

R-404
 10/03/04
 R:\ISO\I-8

Quasar

fases de funcionamiento
working stages
phases de fonctionnement
arbeitsspiel

